

# TRI-BORO



**WORKPLACE SHELVING**

**STORAGE RACKS**

**PALLET RACK**

**SHOP FURNITURE**

**SERVICE CARTS**

**RIVET-RAK™**



- Outstanding Quality
- Affordable Pricing
- On Time Delivery

**800.633.3070**

**triboroshelving.com**

# A Profile of Tri-Boro

Since its inception, Tri-Boro has been dedicated to providing companies with innovative solutions, equipment and programs for all their storage requirements.

## ***Our Product Lines Include:***

**SHELVING • PALLET RACK • RIVET-RAK™  
SERVICE CARTS • WORK BENCHES • SHOP DESKS  
SPECIALTY RACKS • AND MUCH MORE!**

From the largest to the smallest of jobs, our production, warehousing/shipping and customer service departments insure that your order will be delivered on time.

All Tri-Boro products are manufactured in accordance with the highest quality standards of the material handling industry. In the past and into the future - quality, economy, customer service, and attention to detail are the combination of strengths that have kept and will keep Tri-Boro growing.

New and expanded product lines such as our Tall and Heavy Duty Shelving Posts, Rivet-Rak Z Beam and Tri-Boro Pallet Rack are included in the pages to follow.



*Made with Pride in America*



The Tri-Boro Corporation has been in continuous business for over 70 years.

The current ***Tri-Boro Storage Products Company*** has been under the same ownership since 1971.



**T**his edition of The Tri-Boro catalog is lovingly dedicated to the memory of Frederick DeMaio Jr., the founder and owner of Tri-Boro Shelving and Tri-Boro Storage Rack.

Mr. DeMaio served his country honorably in the U.S Army and was later appointed to the New York City Police Department in 1956. He served with distinction and valor and upon his retirement from the NYPD, he embarked on a 49 year business career as a manufacturer of storage systems located in New York and Virginia. He also served as Vice Chair and Chairman for many years in the Material Handling Industry's SMA product trade association group.

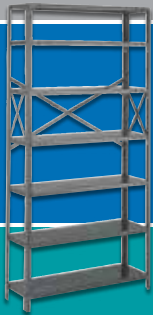
Fred was extremely proud of being an American manufacturer that steadily grew his business and expanded when others in the industry down-sized, sold or otherwise closed their doors under economic pressure. Fred was known to say: "I love watching things grow" and "My word is my bond".

His legacy will be felt by his family, friends and industry professionals for years to come.

## Table of Contents

## Applications

4, 5, 55



### Steel Shelving

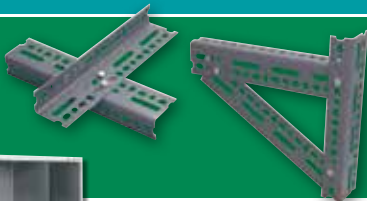
6-21

Features, Shelf & Post Types 6  
Load Capacities & Hinged Doors 7  
Configurations & Specifications 6-16  
Components & Accessories 6-16

### Sturdi-Frame™ Shelving

22-23

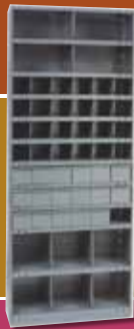
Sturdi-Frame Shelving 22  
Specialty Shelving Racks 23  
Wheel Rack, Reel Rack, Archive Rack/Shelves



### Slotted Angle

24-25

Accessories & Cutter 24  
14 GA. & 12 GA. & Load Capacities 25



### Service Carts & Shelf Trucks

26-28

Service Carts 26-27  
Carts with Drawers & Casters 27  
Mobile Trucks 28

### Bin & Drawer Storage Units

29-36

Bin Divider Units 29-36  
Shelf Drawer Units 36



### Work Benches, Shop Desks

37-39

Work Benches 37  
Work Benches Components 38  
Shop Desks 39



### Rivet-Rak™

40-45

Features/Ordering/Load Tables 40  
Spacemaster & Bulkmaster Rivet-Rak 41  
Rivet-Rak Components 42-44  
Specialty Rivet-Rak 45

### Solid Deck & Perf Deck

46

for Rivet-Rak and Pallet Rack

### Pallet Rack

47-53

Features & Benefits 47  
Frame & Beam Capacity Charts 48  
How to Order 49-52  
Accessories 52  
Quick Ship 53



### Index to Tri-Boro Products

54

# Tri-Boro Storage Products



Installed by ELT Systems Group



# Tri-Boro Storage Products



## Tri-Boro Pallet Rack

- ONE SOURCE for Industrial Steel Shelving and Warehouse Rack
- Quick Ship Program
- 100% USA Made



# Tri-Boro Shelving Features

Tri-Boro Shelving is manufactured in the widest range of sizes available in the industry. When used in combination this array of sizes can meet the most demanding of custom applications.

The flanged shelf is manufactured from cold rolled steel and has "Triple Bends" on all four sides for incomparable strength.

**Standard shelves are manufactured in 24", 30", 36", 42" and 48" widths, and 9", 12", 15", 18", 24", 30" and 36" depths.**



All Tri-Boro steel components receive a rust resistant phosphatized cleaning for better paint adhesion and durability. A custom, quality blended powder coat paint is applied "Electro-Statically" and then baked on in a continuous curing oven for lasting durability and outstanding appearance. This process is the latest innovation for the integrity of paint surface and the protection of our environment.

## STANDARD FINISHES

Tri-Boro's standard finish is Gray. However, all colors shown are available for a small additional charge. The choice of an alternate color may create a slight delay in delivery.

## SHELF TYPES

### Flange Shelf



**Class 0 – No Re-Bar**



**Class 1 – 1 Re-Bar**



**Class 2 – 2 Re-Bar**

**Flange Shelves** are available in both 20 GA. and 18 GA. material thickness. Class 0 is designed for applications that do not require extreme load bearing strength.

The addition of 1 Re-Bar will increase bearing strength by about 50%. The addition of 2 Re-Bars will increase the bearing strength by over 100%. Please see the chart on page 7 for exact load bearing strengths.

### Boxer Shelf

**Boxer Shelves** are constructed of 22, 20 or 18 gauge steel with full welded box formation in front and back of the shelf and have formed channels on both ends. All corners are lapped and welded for additional strength.

The box formation is welded on a 6" center minimum to provide integrity the entire length of the box. All shelves have a box profile height of 1-1/4". All box shelves accommodate either clip or nut and bolt connection to the upright. Please see the chart on page 7 for exact load bearing strengths.



Tri-Boro's "Boxer"™ industrial grade steel shelving features a welded tubular box design with lapped and welded seam corners.

## POST TYPES

**Tri-Boro manufactures rigid roll formed "Box" and companion "Offset Angle" type posts.**

The box post provides unobstructed shelf access. One box post takes the place of two angle posts at the front of a shelving unit.

The offset angle post reduces shelf accessibility by 1 inch per end, although the field length is nominal to the dimension ordered.

Box style post heights range from 3'1" to 11'3". Offset Angle heights range from 3'1" to 12'3".

Both styles are manufactured in 1 foot increments. All posts are 14 gauge steel. Shelves can be either clipped or nut & bolted to the post.



Box Post Holes 1-1/2" O.C.



Offset Angle Post Holes 1-1/2" O.C.



Rolled Formed Angle Post Holes 1" O.C.



Government Post Holes 1" O.C.



Offset Angle Post Holes 1" O.C.

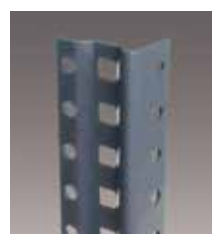
## Heavy Duty Box Style and Heavy Duty Offset Posts

Heights range from 7'3" to 28'.

Both styles are manufactured in 1 foot increments. All posts are standard 13 gauge (Also available in 12 gauge). Shelves can be either clipped or nut and bolted to the post.



Heavy Duty Box Post



Heavy Duty Offset Post

# Tri-Boro Shelf Load Capacities

## FLANGE SHELF



- TRIPLE BENDS ALL FOUR SIDES
- 8 DEPTHS
- 5 WIDTHS
- 20 GA. AND 18 GA.

## BOXER™ (BOX SHELF)



- FULL WELDED BOX FORMATION (FRONT AND BACK)
- 6 DEPTHS
- 5 WIDTHS
- 22 GA., 20 GA. AND 18 GA.
- AVAILABLE PERFORATED AND UNPERFORATED

### FLANGE SHELVES LOAD CAPACITY COMPARISON CHART

Size	20 GA.	18 GA.	1 Rebar 20 GA.	1 Rebar 18 GA.	2 Rebar 20 GA.	2 Rebar 18 GA.
12" x 36"	300	725	475	900	650	1075
12" x 42"	250	500	425	675	600	850
12" x 48"	225	400	400	575	575	750
15" x 36"	300	700	475	875	650	1050
15" x 42"	225	475	400	650	575	825
15" x 48"	200	400	375	575	550	750
18" x 36"	300	700	475	875	650	1050
18" x 42"	255	450	430	625	605	800
18" x 48"	175	375	350	550	525	725
24" x 36"	300	650	475	825	650	1000
24" x 42"	200	450	375	625	550	800
24" x 48"	175	325	350	500	525	675
30" x 36"	200	500	375	675	550	850
30" x 42"	175	400	350	575	525	750
30" x 48"	125	300	300	475	475	650
36" x 36"	175	400	350	575	525	750
36" x 42"	175	400	350	575	525	750
36" x 48"	125	300	300	475	475	650

### BOXER™ SHELVES LOAD CAPACITY COMPARISON CHART

Size	22 GA. Capacity	20 GA. Capacity	18 GA. Capacity
12" x 36"	600	850	1100
12" x 42"	450	650	900
12" x 48"	400	550	750
15" x 36"	600	825	1100
15" x 42"	450	625	900
15" x 48"	400	600	850
18" x 36"	600	850	1200
18" x 42"	500	650	950
18" x 48"	400	550	900
24" x 36"	550	850	1200
24" x 42"	450	650	1000
24" x 48"	375	550	900
30" x 36"	-	650	1200
30" x 42"	-	625	900
30" x 48"	-	500	750
36" x 36"	-	550	900
36" x 42"	-	525	850
36" x 48"	-	500	750

## Tri-Boro Hinged Doors for Shelving

- HINGED DOORS CONSTRUCTED OF DURABLE 20 GAUGE STEEL, 13 GAUGE FRAME
- DOORS EQUIPPED WITH THREE-POINT LOCKING DEVICE, OPEN 180 DEGREES
- 85" H & 73" H DOORS HAVE A PAN REINFORCEMENT, SPOT WELDED ON EACH SIDE
- TOP AND BOTTOM LOCKING ROD CHANNELS
- EASY TO INSTALL! DOORS PRE-ASSEMBLED AND READY TO INSTALL
- INCLUDED: STANDARD SATIN CHROME FINISHED HANDLE WITH LOCK & 2 KEYS (Keyed Differently)
- DOORS WILL FIT OFFSET & ROLLED-FORMED POSTS

*(Doors Only - Shelving components sold separately. Not for use with box posts.)*

Catalog No.	W x H	Wt. (lbs.)
HD3637	36" x 37"	35.0
HD3673	36" x 73"	65.0
HD3685	36" x 85"	70.0
HD4837	48" x 37"	40.0
HD4873	48" x 73"	85.0
HD4885	48" x 85"	90.0
HDK2	Extra Key	



37" H



73" H



85" H

Standard Doors Available in 3 Heights: 37", 73" & 85"

# Tri-Boro Shelving Posts & Standard Foot Plates



## OFFSET ANGLE POST 1-1/2" O.C.

Made of 14 gauge cold-rolled steel, roll formed into a 1" x 1-7/8" angle. The wide flange is punched on 1-1/2" centers with 7/16" square slots to receive shelf clips and 5/16" diameter holes on 1-1/2" centers for the attachment of side sway braces or solid panels.

Model Number	Size	Wt.
OP37	3'1"	2.0
OP49	4'1"	3.0
OP61	5'1"	4.0
OP73	6'1"	4.8
OP85	7'1"	5.5
OP97	8'1"	6.0
OP109	9'1"	7.0
OP121	10'1"	8.0
OP133	11'1"	8.8
OP145	12'1"	9.5



## OFFSET ANGLE POSTS 1" O.C.

Made of 14 gauge cold-rolled steel, roll formed into a 1" x 1-7/8" angle. The wide flange is punched on 1" centers with 7/16" square slots to receive shelf clips and 5/16" diameter holes on 1" centers for the attachment of side sway braces or solid panels.

Model Number	Size	Wt.
OP39	3'3"	2.0
OP51	4'3"	3.0
OP63	5'3"	4.0
OP75	6'3"	4.8
OP87	7'3"	5.5
OP99	8'3"	6.0
OP111	9'3"	7.0
OP123	10'3"	8.0
OP135	11'3"	8.8



## ROLLED FORMED POST

A 1-1/4" x 1-1/4" angle made from rolled formed steel with holes punched on 1" centers. All posts are standard 13 gauge (Also available in 12 gauge).

Model Number	Size	Wt.	GA.
RFP39	3'3"	1.8	14
RFP51	4'3"	2.5	14
RFP63	5'3"	2.8	14
RFP75	6'3"	3.6	14
RFP87	7'3"	4.7	13
RFP99	8'3"	5.2	13
RFP111	9'3"	6.1	13
RFP123	10'3"	7.9	12
RFP147	12'3"	9.1	12
RFP171	14'3"	11.9	12
RFP195	16'3"	13.5	12



## BOX POST 1-1/2" O.C.

This clip-type post eliminates items being snagged during loading and unloading. Rectangular holes for clips punched on 1-1/2" centers and 5/16" diameter holes 1-1/2" on center as above. Made from 14 gauge cold-rolled steel.

Model Number	Size	Wt.
BP37	3'1"	2.2
BP49	4'1"	3.4
BP61	5'1"	4.5
BP73	6'1"	5.4
BP85	7'1"	6.3
BP97	8'1"	7.2
BP109	9'1"	8.1
BP121	10'1"	9.0



## BOX POST 1" O.C.

This clip-type post eliminates items being snagged during loading and unloading. Rectangular holes for clips punched on 1" centers and 5/16" diameter holes 1" on center as above. Made from 14 gauge cold-rolled steel.

Model Number	Size	Wt.
BP39	3'3"	2.2
BP51	4'3"	3.4
BP63	5'3"	4.5
BP75	6'3"	5.4
BP87	7'3"	6.3
BP99	8'3"	7.2
BP111	9'3"	8.1
BP123	10'3"	9.0



## GOVERNMENT POST ROLLED FORMED STEEL

13 gauge hot-rolled steel 1" x 1-3/4" with 1" centers.

Model Number	Size	Wt.
GP75	6'3"	4.9
GP87	7'3"	5.7
GP99	8'3"	6.5

## STANDARD FOOT PLATES



Model Number  
FPBP1  
(For use with  
1" & 1-1/2" O.C.)



Model Number  
FPOP1-D (1" O.C.)



Model Number  
FPOP15-D (1-1/2" O.C.)



Model Number  
FPOP1-S (L or R) (1" O.C.)



FPOP15-S (L or R) (1-1/2" O.C.) (not pictured)

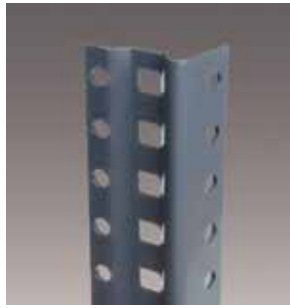
# Tri-Boro Heavy Duty Shelving Posts & Heavy Duty Foot Plates



## HEAVY DUTY BOX POST 1" O.C.

Grade 50 Face is .750 x 2.4375  
All posts are standard 13 gauge  
(Also available in 12 gauge).

Model Number	Size	Wt.
HDBP87-13	7'3"	11.6
HDBP99-13	8'3"	13.3
HDBP111-13	9'3"	14.8
HDBP123-13	10'3"	16.4
HDBP135-13	11'3"	18.0
HDBP147-13	12'3"	19.6
HDBP159-13	13'3"	21.2
HDBP171-13	14'3"	22.8
HDBP183-13	15'3"	24.4
HDBP195-13	16'3"	26.0



## HEAVY DUTY OFFSET POST 1" O.C.

Grade 50 Size: 1.375 x 2.063  
All posts are standard 13 gauge  
(Also available in 12 gauge).

Model Number	Size	Wt.
HDOP87-13	7'3"	7.1
HDOP99-13	8'3"	8.1
HDOP111-13	9'3"	9.1
HDOP123-13	10'3"	10.3
HDOP135-13	11'3"	11.3
HDOP147-13	12'3"	12.0
HDOP159-13	13'3"	13.0
HDOP171-13	14'3"	14.0
HDOP183-13	15'3"	15.0
HDOP195-13	16'3"	15.9

## Heavy Duty High Bay Shelving Posts

- Available in 12 & 13 gauge
- Finished heights up to 28' \* without splicing
- Available in both offset angle and beaded box post

\* Please contact Customer Service for ordering information on sizes above 16'3".

## FOOT PLATES



**Model Number**  
**FPHDBP1**  
1" O.C. Heavy Duty Box Post Foot Plate



**Model Number**  
**FPHD1-SL**  
1" O.C. Heavy Duty Offset Post Foot Plate Single Left

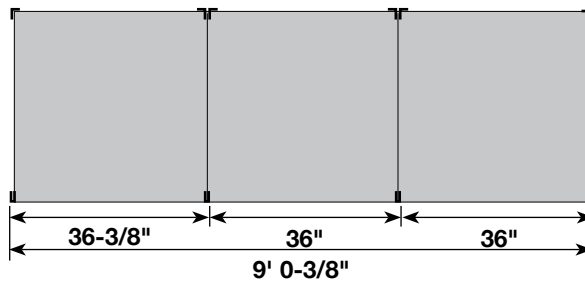


**Model Number**  
**FPHD1-SR**  
1" O.C. Heavy Duty Offset Post Foot Plate Single Right

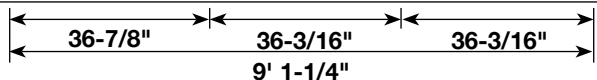


**Model Number**  
**FPHD1-D**  
1" O.C. Heavy Duty Offset Post Foot Plate Double

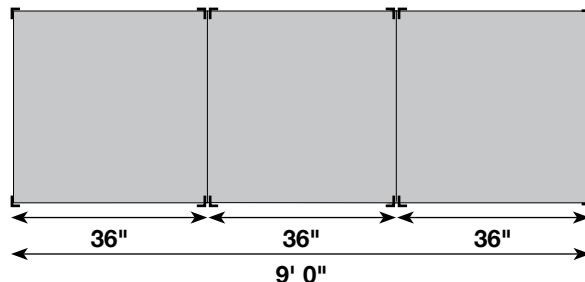
Shelving with box posts at front and offset angle posts at rear



Measurements for HD box post

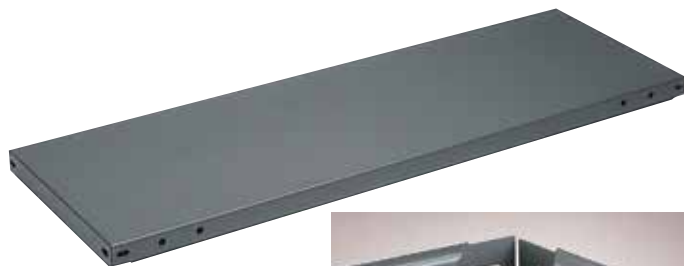


Shelving with offset angle posts front and rear



When placing units back to back, omit back panel on 1/2 of the units, thus permitting the use of a common back panel. Same applies to open type, omit 1/2 back sways.

# Tri-Boro Flange & Box Shelves



Available  
perforated  
and unperforated



## ADJUSTABLE STEEL FLANGE SHELVES (FOR CLIP-TYPE AND NUT AND BOLT)

All shelves are made of 20 or 18 gauge cold rolled steel. Each side has triple bends for added strength.

NOTE: ADD SUFFIX X FOR 18 GAUGE  
EXAMPLE: S924X = 18 GAUGE 9" x 24"

Model Number	Size	20 GA. Wt.	18 GA. Wt.
S924	9" x 24"	3.8	5.3
S930	9" x 30"	4.8	6.3
S936	9" x 36"	5.0	7.3
S942	9" x 42"	6.9	8.3
S948	9" x 48"	8.9	9.3
S1224	12" x 24"	4.9	6.4
S1230	12" x 30"	5.0	6.7
S1236	12" x 36"	6.5	8.0
S1242	12" x 42"	8.0	10.3
S1248	12" x 48"	9.0	11.6
S1524	15" x 24"	5.9	7.5
S1530	15" x 30"	6.1	9.0
S1536	15" x 36"	7.1	10.5
S1542	15" x 42"	8.2	12.0
S1548	15" x 48"	9.5	13.5
S1824	18" x 24"	6.9	8.7
S1830	18" x 30"	7.0	10.4
S1836	18" x 36"	8.2	12.1
S1842	18" x 42"	9.5	13.8
S1848	18" x 48"	10.7	15.5
S2124	21" x 24"	8.7	10.0
S2130	21" x 30"	8.9	11.3
S2136	21" x 36"	10.5	14.6
S2142	21" x 42"	12.1	16.9
S2148	21" x 48"	13.7	19.2
S2424	24" x 24"	9.0	11.0
S2430	24" x 30"	9.3	13.3
S2436	24" x 36"	11.0	15.6
S2442	24" x 42"	11.9	17.9
S2448	24" x 48"	13.9	20.2
S3030	30" x 30"	13.0	16.6
S3036	30" x 36"	13.5	18.8
S3042	30" x 42"	14.0	21.6
S3048	30" x 48"	17.5	24.4
S3636	36" x 36"	16.0	22.1
S3642	36" x 42"	18.4	25.4
S3648	36" x 48"	19.5	28.6

NOTE: OTHER SIZES AVAILABLE - PLEASE CALL CUSTOMER SERVICE

## BOXER™ (BOX-SHELF) ADJUSTABLE STEEL BOX SHELVES

Shelves are constructed of 18, 20 or 22 gauge steel with full welded box formation in front and back of shelf and have formed channels on both ends. All four corners are lapped and welded for additional strength. The box formation is welded on a 6-inch center minimum to provide integrity to the entire length of the box. All shelves have a box profile height of 1-1/4". All box shelves are designed to accommodate either clip or nut & bolt connection to the upright, and perforated shelves are punched for dividers on 2" centers.

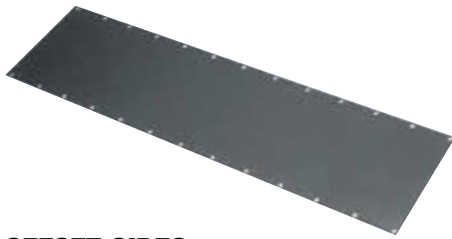
\*"BOXER™" shelves are compatible with all existing Tri-Boro shelving components.

NOTE: ADD L FOR 22 GAUGE / ADD X FOR 18 GAUGE

Model Number	Size	22 GA. Wt.	20 GA. Wt.	18 GA. Wt.
BX1224	12" x 24"	4.1	4.8	6.3
BX1230	12" x 30"	5.1	5.8	7.1
BX1236	12" x 36"	6.0	7.2	9.1
BX1242	12" x 42"	6.9	8.4	10.4
BX1248	12" x 48"	7.8	9.5	11.8
BX1524	15" x 24"	4.7	5.6	7.2
BX1530	15" x 30"	5.8	6.8	8.9
BX1536	15" x 36"	7.0	8.4	10.5
BX1542	15" x 42"	8.0	9.7	12.2
BX1548	15" x 48"	9.1	11.0	13.8
BX1824	18" x 24"	5.9	6.3	8.3
BX1830	18" x 30"	6.6	7.7	10.2
BX1836	18" x 36"	8.0	9.6	12.1
BX1842	18" x 42"	9.2	11.1	13.9
BX1848	18" x 48"	10.4	12.6	15.8
BX2424	24" x 24"	6.7	7.9	10.0
BX2430	24" x 30"	8.2	9.7	12.0
BX2436	24" x 36"	10.0	12.0	15.1
BX2442	24" x 42"	11.5	13.8	17.4
BX2448	24" x 48"	13.0	15.7	19.7
BX3030	30" x 30"	-	11.6	15.0
BX3036	30" x 36"	-	14.4	18.1
BX3042	30" x 42"	-	16.6	20.9
BX3048	30" x 48"	-	18.8	23.6
BX3636	36" x 36"	-	16.8	22.1
BX3642	36" x 42"	-	19.3	24.3
BX3648	36" x 48"	-	22.0	27.5

NOTE: OTHER SIZES AVAILABLE - PLEASE CALL CUSTOMER SERVICE

# Tri-Boro Side & Back Panels



## OFFSET SIDES (Clip-Type Shelving - 1" O.C.)\* SIDE PANEL - 24 GA.

*\* Also for use with 1-1/2" O.C.*

Made of cold-rolled steel. Punched along edges with 3/8" dia. holes on 1" centers for attaching to front and rear post.

Model Number	Shelf Depth	Dimensions	Wt.
OS639	9"	6" x 39"	2.5
OS645	9"	6" x 45"	2.9
OS651	9"	6" x 51"	3.3
OS939	12"	9" x 39"	3.0
OS945	12"	9" x 45"	4.0
OS951	12"	9" x 51"	5.0
OS1239	15"	12" x 39"	3.5
OS1245	15"	12" x 45"	3.5
OS1251	15"	12" x 51"	5.2
OS1539	18"	15" x 39"	4.5
OS1545	18"	15" x 45"	5.0
OS1551	18"	15" x 51"	6.0
OS1839	21"	18" x 39"	5.7
OS1845	21"	18" x 45"	6.5
OS1851	21"	18" x 51"	7.4
OS2139	24"	21" x 39"	6.0
OS2145	24"	21" x 45"	7.0
OS2151	24"	21" x 51"	8.0
OS2739	30"	27" x 39"	7.5
OS2745	30"	27" x 45"	8.0
OS2751	30"	27" x 51"	9.5
OS3339	36"	33" x 39"	9.0
OS3345	36"	33" x 45"	11.0
OS3351	36"	33" x 51"	12.0
OS4539	48"	45" x 39"	12.0
OS4545	48"	45" x 45"	15.0
OS4551	48"	45" x 51"	16.0

**NOTE: FOR RIVET-RACK BACKS & SIDES,  
SEE PAGE 44**

## OFFSET BACKS (Clip-Type Shelving - 1" O.C.)\* BACK PANEL - 24 GA.

*\* Also for use with 1-1/2" O.C.*

Made of cold-rolled steel. Punched along edges with 3/8" dia. holes on 1" centers for attaching to front and rear post.

Model Number	Shelf Width	Dimensions	Wt.
OB2439	24"	24" x 39"	6.1
OB2445	24"	24" x 45"	7.1
OB2451	24"	24" x 51"	8.1
OB3039	30"	30" x 39"	7.7
OB3045	30"	30" x 45"	9.0
OB3051	30"	30" x 51"	10.2
OB3639	36"	36" x 39"	9.2
OB3645	36"	36" x 45"	10.7
OB3651	36"	36" x 51"	12.2
OB4239	42"	42" x 39"	10.7
OB4245	42"	42" x 45"	12.5
OB4251	42"	42" x 51"	14.2
OB4839	48"	48" x 39"	12.3
OB4845	48"	48" x 45"	14.3
OB4851	48"	48" x 51"	16.3

## CLIP-TYPE SHELVING BACK AND SIDE REQUIREMENTS - 1" O.C.

*\* Also for use with 1-1/2" O.C.*

To make the following heights of units follow the chart below to determine number and dimensions of components.

Shelving Height	# of Backs or Sides
5' 3" =	2 Pieces 39"
6' 3" =	2 Pieces 39"
7' 3" =	2 Pieces 45"
8' 3" =	2 Pieces 51"
9' 3" =	3 Pieces 39"
10' 3" =	3 Pieces 45"
11' 3" =	3 Pieces 51"
12' 3" =	3 Pieces 51"
14' 3" =	4 Pieces 45"
16' 3" =	4 Pieces 51"

## BACK AND SIDES (Nut and Bolt Type)

Made of cold-rolled steel. Punched along edges with 3/8" dia. holes on 1" centers for attaching to front and rear post.

**Backs over 4' 3" consist of overlapping pieces.**

Model Number	Size	Wt.
BS939	9" x 3' 3"	2.5
BS945	9" x 45"	2.9
BS951	9" x 4' 3"	3.3
BS1239	12" x 3' 3"	3.0
BS1245	12" x 45"	4.0
BS1251	12" x 4' 3"	5.0
BS1539	15" x 3' 3"	3.5
BS1545	15" x 45"	3.5
BS1551	15" x 4' 3"	5.2
BS1839	18" x 3' 3"	4.5
BS1845	18" x 45"	5.0
BS1851	18" x 4' 3"	6.0
BS2139	21" x 3' 3"	5.7
BS2145	21" x 45"	6.5
BS2151	21" x 4' 3"	7.4
BS2439	24" x 3' 3"	6.0
BS2445	24" x 45"	7.0
BS2451	24" x 4' 3"	8.0
BS3039	30" x 3' 3"	7.5
BS3045	30" x 45"	8.0
BS3051	30" x 4' 3"	9.5
BS3639	36" x 3' 3"	9.0
BS3645	36" x 45"	11.0
BS3651	36" x 4' 3"	12.0
BS4239	42" x 3' 3"	10.5
BS4245	42" x 45"	13.5
BS4251	42" x 4' 3"	15.0
BS4839	48" x 3' 3"	12.0
BS4845	48" x 45"	15.0
BS4851	48" x 4' 3"	16.0

Special sizes available

Special bending for tables and counters available

## NUT & BOLT SHELVING BACK AND SIDE REQUIREMENTS

To make the following heights of units follow the chart below to determine number and dimensions of components.

Shelving Height	# of Backs or Sides	Shelving Height	# of Backs or Sides
5' 3" =	2 Pieces 39"	10' 3" =	3 Pieces 45"
6' 3" =	2 Pieces 39"	11' 3" =	3 Pieces 51"
7' 3" =	2 Pieces 45"	12' 3" =	3 Pieces 51"
8' 3" =	2 Pieces 51"	14' 3" =	4 Pieces 45"
9' 3" =	3 Pieces 39"		

# Tri-Boro Sway Braces, Label Holders, Reinforcements, Shelving Clips & Hardware

## SWAY BRACES

Made of 1" wide hot-rolled 12 gauge steel strip with safety edges. Ends are radiused and punched for attaching to front and rear post.



Model Number	Shelf Size	Wt.
SB18	12"-18"	1.0
SB36	24"-36"	2.0
SB48	42"-48"	3.2

### General side/back & sway brace info:

When supplying open shelving units, one pair of braces for each side/back location may not always be sufficient. The following is our recommended sway brace to unit height chart. Note: Common sides and backs share sway bracing.

Post height up to 7'	<b>1 pair of sway braces</b> for each side/back location
Post height from 8' to 10'	<b>2 pair of sway braces</b> for each side/back location
Post height from 11' to 13'	<b>3 pair of sway braces</b> for each side/back location
Post height from 14' to 16'	<b>4 pair of sway braces</b> for each side/back location



1-1/2" O.C. (COP15)



1" O.C. (COP1)

### CLIPS FOR OFFSET/BOX POSTS

14 gauge (.078 thick) steel zinc plated

Model Number	Wt.
COP15	1 oz.
COP1	1 oz.



## LABEL HOLDERS

Made of cold-rolled steel. Punched on ends for attaching to front edge of shelves. The top and bottom edges are folded over to accommodate labels approximately 1" high.

Model Number	Size	Wt.
LH24	24"	.2
LH30	30"	.3
LH36	36"	.4
LH42	42"	.5
LH48	48"	.6

NOTE: Welded Label Holders Available for flange shelves only.



## REINFORCEMENTS

A 1" x 1" angle made of 12 gauge steel used to reinforce front and /or back of shelf.

Model Number	Size	Wt.
RB18	18"	.7
RB21	21"	1.0
RB24	24"	1.4
RB30	30"	1.7
RB36	36"	2.0
RB42	42"	2.4
RB48	48"	2.7



## ROUNDHEAD BOLTS WITH HEX NUTS

(Sold in boxes of 100)

Model Number	Size	Quantity	Wt.
HB63	1/4" x 5/8"	100	2
HB100	1/4" X 1"	100	2.5
HB125	1/4" X 1-1/4"	100	3

# Tri-Boro Angle Sways & Splices

## ANGLE SWAYS (For 1" on Center Offset and Nut & Bolt Shelving)



A 5" x 5" L-shaped bracket that is made of 11 gauge steel with holes punched 2" on center. Gives 5 points of fastening between shelf and upright to prevent lateral movement when sway bracing is not used.

Model Number	Size	Wt.
AN55	5" x 5"	.02

## OFFSET ANGLE SWAYS (For 1-1/2" on Center Shelving)



A 5" x 5" L-shaped bracket made of 11 gauge steel with one leg punched on 2" centers and the other punched 1-1/2" on center. Gives 5 points of fastening between shelf and upright to prevent lateral movement when sway bracing is not used.

Model Number	Size	Wt.
OAS55	5" x 5"	.2

## SPLICE (For Rolled Formed Post)



Made of hot-rolled 12 gauge steel. Punched 2" on center for the joining of two roll form posts. Dimensions of splice are 1" x 1" x 7".

Model Number	Wt.
SP 117	.32

## OFFSET SPLICE

Made from cold-rolled 12 gauge steel. Punched on 1-1/2" and 1" on centers from either end for the joining of two offset posts. Dimensions of splice are 3/4" x 1" x 5".

Model Number	Wt.
OSP115	.18
OSP1	.18



1-1/2" O.C.

1" O.C.



## BOX POST SPLICE

Made from cold-rolled 12 gauge steel. Punched on 1-1/2" and 1" on centers from either end for the joining of two box posts.

Model Number	Wt.	Dimensions
OSP 115	0.2	4.5" x 1.775"
OSP 1	0.2	5.5" x 1.775"



## HEAVY DUTY OFFSET POST SPLICE

Made from cold-rolled 12 gauge steel. Punched on 1" on centers from either end for the joining of two heavy duty offset posts.

Model Number	Wt.	Dimensions
HDOSP 1	0.4	7" x 1.875" x 1.223"



## HEAVY DUTY BOX POST SPLICE

Made from cold-rolled 12 gauge steel. Punched on 1" on centers from either end for the joining of two heavy duty box posts.

Model Number	Wt.	Dimensions
HDBSP 1	0.4	7.5" x 1.775"

# Tri-Boro Shelving Bin Fronts



## BIN FRONTS (Nut and Bolt Shelving)

Made of cold rolled  
18 gauge steel.

Top edge is formed into a  
hem. Bottom is flanged to  
rest on shelf and punched  
to provide means of  
attaching to post.

Model Number	Size H x W	Wt.
BF224	2" x 24"	.9
BF230	2" x 30"	1.2
BF236	2" x 36"	1.4
BF242	2" x 42"	1.6
BF248	2" x 48"	1.8
BF424	4" x 24"	1.6
BF430	4" x 30"	2.0
BF436	4" x 36"	2.5
BF442	4" x 42"	2.8
BF448	4" x 48"	3.2
BF624	6" x 24"	2.3
BF630	6" x 30"	2.8
BF636	6" x 36"	4.0
BF642	6" x 42"	4.4
BF648	6" x 48"	5.1



## OFFSET BIN FRONTS (Clip-Type Shelving 1-1/2" O.C.)

Made from 18 gauge steel

Model Number	Size H x W	Wt.
OBF124	1-1/2" x 24"	.6
OBF130	1-1/2" x 30"	.8
OBF136	1-1/2" x 36"	.9
OBF142	1-1/2" x 42"	1.1
OBF148	1-1/2" x 48"	1.9
OBF324	3" x 24"	.9
OBF330	3" x 30"	1.2
OBF336	3" x 36"	1.4
OBF342	3" x 42"	1.7
OBF348	3" x 48"	1.9
OBF624	6" x 24"	1.1
OBF630	6" x 30"	1.4
OBF636	6" x 36"	1.6
OBF642	6" x 42"	1.9
OBF648	6" x 48"	2.2



## OFFSET BIN FRONTS (Clip-Type Shelving 1" O.C.)

Made from 20 gauge steel

Model Number	Size H x W	Wt.
OBF224	2" x 24"	.9
OBF230	2" x 30"	1.2
OBF236	2" x 36"	1.4
OBF242	2" x 42"	1.6
OBF248	2" x 48"	1.8
OBF424	4" x 24"	1.6
OBF430	4" x 30"	2.0
OBF436	4" x 36"	2.5
OBF442	4" x 42"	2.8
OBF448	4" x 48"	3.2
OBF624	6" x 24"	2.3
OBF630	6" x 30"	2.8
OBF636	6" x 36"	4.0
OBF642	6" x 42"	4.4
OBF648	6" x 48"	5.1



## OFFSET BIN FRONTS BOX POST (Clip-Type Shelving 1-1/2" O.C.)

Made from 18 gauge steel

Model Number	Size H x W	Wt.
OBBP324	3" x 24"	.9
OBBF330	3" x 30"	1.2
OBBF336	3" x 36"	1.4
OBBF342	3" x 42"	1.6
OBBF348	3" x 48"	1.9

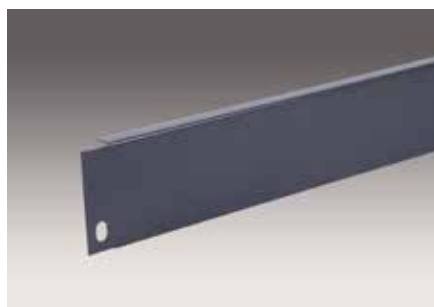


## OFFSET BIN FRONTS BOX POST (Clip-Type Shelving 1" O.C.)

Made from 18 gauge steel

Model Number	Size H x W	Wt.
OBBP224	2" x 24"	.9
OBBF230	2" x 30"	1.2
OBBF236	2" x 36"	1.4
OBBF242	2" x 42"	1.6
OBBF248	2" x 48"	1.8

# Tri-Boro Shelving Bases & Aisle Braces



## UNIVERSAL BASES

### (For Clip and Nut & Bolt Shelving)

Made of cold-rolled steel. Channel formed to fit between shelf and floor. Punched for bolting to holes in front flange of post.

Model Number	Size	Wt.
OBS224	2" x 24"	.9
OBS230	2" x 30"	1.2
OBS236	2" x 36"	1.4
OBS242	2" x 42"	1.6
OBS248	2" x 48"	1.8
OBS324	3" x 24"	.9
OBS330	3" x 30"	1.2
OBS336	3" x 36"	1.2
OBS342	3" x 42"	1.7
OBS348	3" x 48"	1.9



## BASES (Nut & Bolt Shelving)

Made of cold-rolled 18 gauge steel. Channel formed to fit between shelf and floor. Pierced for bolting to holes in front flange of post. Bases 4" and higher are punched 2" on center.

Model Number	Size	Wt.
BAS412	4" x 12"	.8
BAS415	4" x 15"	.8
BAS418	4" x 18"	.8
BAS424	4" x 24"	1.6
BAS430	4" x 30"	2.0
BAS436	4" x 36"	2.5
BAS442	4" x 42"	2.8
BAS448	4" x 48"	3.2
BAS612	6" x 12"	1.1
BAS615	6" x 15"	1.1
BAS618	6" x 18"	1.1
BAS624	6" x 24"	2.3
BAS630	6" x 30"	2.8
BAS636	6" x 36"	4.0
BAS642	6" x 42"	4.4
BAS648	6" x 48"	5.1



## OFFSET BASES FOR BOX POST (Clip-Type Shelving 1-1/2" O.C.)

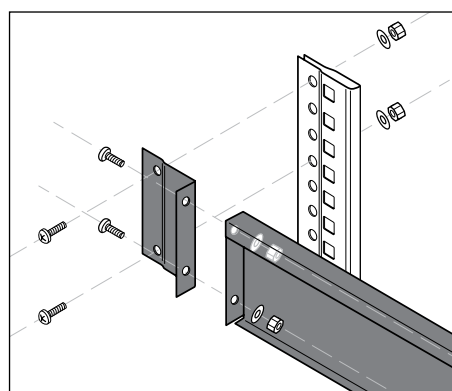
Made of cold-rolled 18 gauge steel.

Model Number	Size	Wt.
OBB324	3" x 24"	.9
OBB330	3" x 30"	1.2
OBB336	3" x 36"	1.4
OBB342	3" x 42"	1.7
OBB348	3" x 48"	1.9



## OFFSET BASES FOR BOX POST (Clip-Type Shelving 1" O.C.)

Model Number	Size	Wt.
OBB224	2" x 24"	.9
OBB230	2" x 30"	1.2
OBB236	2" x 36"	1.4
OBB242	2" x 42"	1.6
OBB248	2" x 48"	1.8



## OFFSET AISLE BRACES

**FOR BOX POST** Includes aisle brace, adapter & hardware

Model Number	Size	Wt.
BAB1-30	30"	5
BAB1-36	36"	5.8
BAB1-42	42"	6.7
BAB1-48	48"	7.5
BAB15-30	30"	5
BAB15-36	36"	5.8
BAB15-42	42"	6.7
BAB15-48	48"	7.5



## OFFSET AISLE BRACES (Clip-Type Shelving)

Made of 13 gauge channel formed steel with one additional return flange on top for added strength. End tabs are flanged at 90° angles with holes punched on 1-1/2" centers.

Model Number	Size	Wt.
OAB30	30"	4.6
OAB36	36"	5.4
OAB42	42"	6.3
OAB48	48"	7.1



## AISLE BRACES (Nut & Bolt Shelving)

Made of 13 gauge channel formed steel with one additional return flange on top for added strength. End tabs are flanged at 90° angles with holes punched on 2" centers.

Model Number	Size	Wt.
AB30	30"	4.6
AB36	36"	5.4
AB42	42"	6.3
AB48	48"	7.1

# Tri-Boro Bin Dividers, Shelf Boxes & Shelf Box Dividers



## SLIDING DIVIDERS

Made of cold-rolled 18 gauge steel. Top corners are rounded for safety. Bottom is flanged for attachment to shelf, without hardware, allowing for horizontal mobility.

Model Number	Size H x D	Wt.
SD412	4" x 12"	1.2
SD415	4" x 15"	1.5
SD418	4" x 18"	1.7
SD424	4" x 24"	2.2
SD612	6" x 12"	1.7
SD615	6" x 15"	1.8
SD618	6" x 18"	1.9
SD624	6" x 24"	2.5
SD812	8" x 12"	2.0
SD815	8" x 15"	2.05
SD818	8" x 18"	2.1
SD824	8" x 24"	2.8

Optional label holder:  
add -LH to part number.



## CLIPS FOR BIN DIVIDERS\*

Model Number	Wt.
CBDIV	8 oz. per 100

\* Please specify: Clear for box shelves, Black for perforated flange shelves - same model number



## BIN DIVIDERS

Made of cold rolled 24 gauge steel. Front and back edges are rolled to provide rigidity. Top and bottom are flanged and punched for attachment to shelves. Dividers are installed with snap-in spring-type clips.



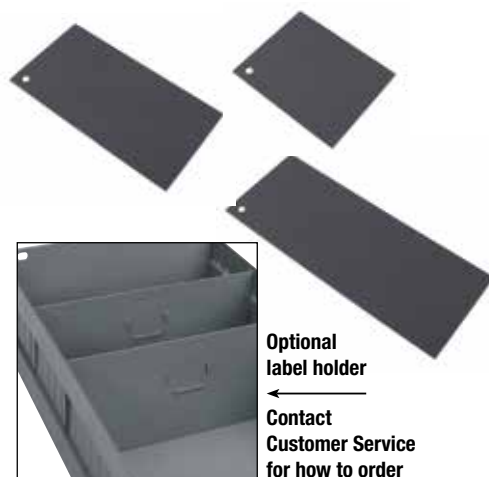
Model Number	Size H x D	Wt.
BD612	6" x 12"	.8
BD615	6" x 15"	1.1
BD618	6" x 18"	1.3
BD624	6" x 24"	1.6
BD812	8" x 12"	1.0
BD815	8" x 15"	1.6
BD818	8" x 18"	1.9
BD824	8" x 24"	2.5
BD912	9" x 12"	.9
BD915	9" x 15"	1.1
BD918	9" x 18"	1.3
BD924	9" x 24"	1.8
BD1012	10" x 12"	1.0
BD1015	10" x 15"	1.6
BD1018	10" x 18"	1.9
BD1024	10" x 24"	2.5
BD1212	12" x 12"	1.3
BD1215	12" x 15"	2.0
BD1218	12" x 18"	2.5
BD1224	12" x 24"	2.9
BD1412	14" x 12"	1.7
BD1415	14" x 15"	2.1
BD1418	14" x 18"	2.5
BD1424	14" x 24"	2.9
BD1512	15" x 12"	1.3
BD1515	15" x 15"	1.7
BD1518	15" x 18"	2.0
BD1524	15" x 24"	2.7
BD1612	16" x 12"	1.9
BD1615	16" x 15"	2.2
BD1618	16" x 18"	2.8
BD1624	16" x 24"	3.8
BD1812	18" x 12"	1.6
BD1815	18" x 15"	2.0
BD1818	18" x 18"	2.4
BD1824	18" x 24"	3.3



## SHELF BOXES

Front and rear panels are made of 20 gauge steel to help prevent unsightly dings. Body of box is made of 22 gauge steel. Front panel has built-in handle and 2" label holder. All boxes are 4-5/8" high. Dividers are not included but may be added as an option.

Model Number	Size W x H x D	Wt.
SB5410	5-1/2" x 4-5/8" x 10-7/8"	2.16
SB8410	8-1/4" x 4-5/8" x 10-7/8"	2.68
SB11410	11" x 4-5/8" x 10-7/8"	3.28
SB5416	5-1/2" x 4-5/8" x 16-7/8"	3.02
SB8416	8-1/4" x 4-5/8" x 16-7/8"	3.75
SB11416	11" x 4-5/8" x 16-7/8"	4.59
SB5422	5-1/2" x 4-5/8" x 22-7/8"	3.89
SB8422	8-1/4" x 4-5/8" x 22-7/8"	4.82
SB11422	11" x 4-5/8" x 22-7/8"	5.9



Optional  
label holder

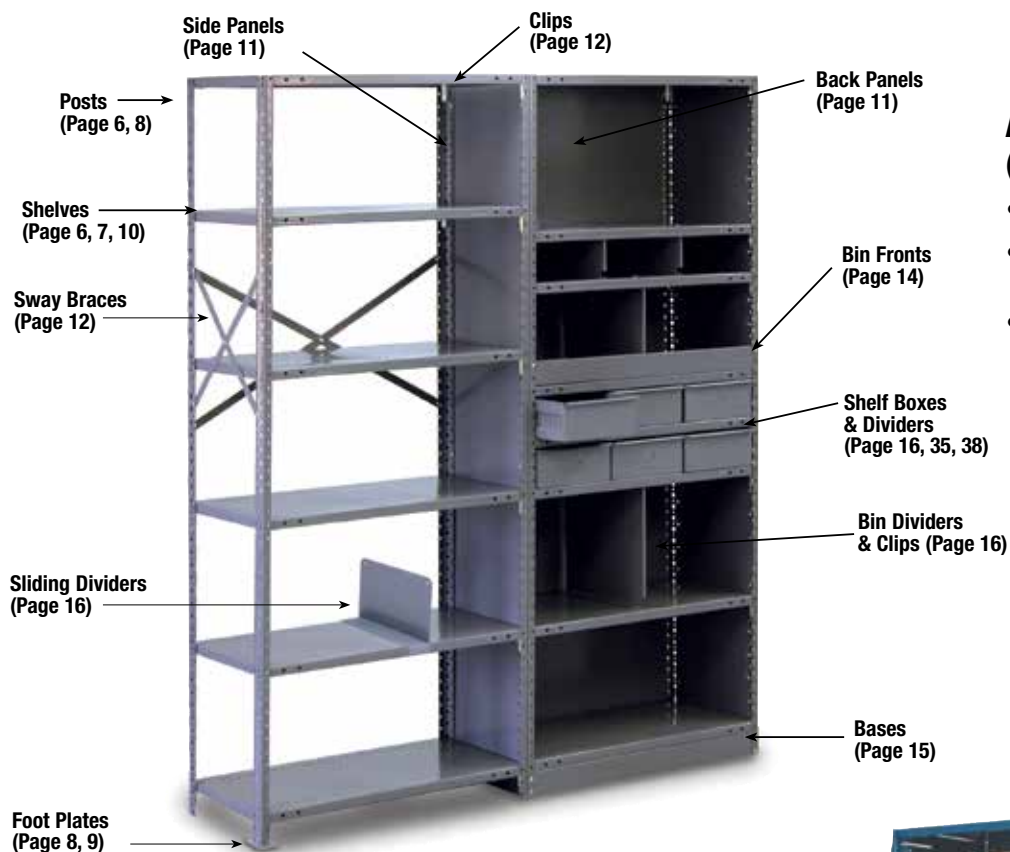
Contact  
Customer Service  
for how to order

## SHELF BOX DIVIDERS

Made of 22 gauge steel.

Model Number	Size	Wt.
SBD5	5"	.0
SBD8	8"	.5
SBD11	11"	1.0

# Tri-Boro Shelving Parts Identification & Quick Page Reference



## Additional Parts (Not Shown)

- Splices, Angle Sways (Page 13)
- Shelf Reinforcements, Label Holders (Page 12-13)
- Aisle Braces (Page 15)

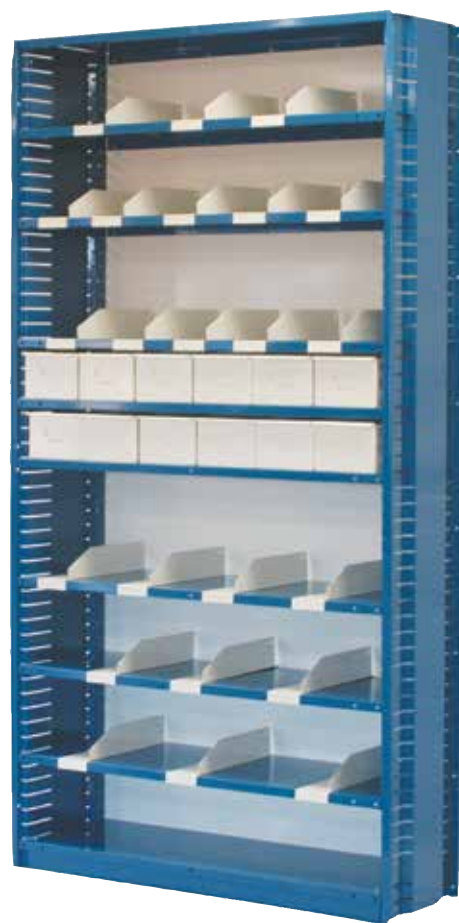
## AUTOMOTIVE SHELVING

Automotive Unit and Accessories	Weight	Part No.
Basic Unit: 12"D x 36"W x 84"H (10 Shelf)	105.0	A361284
<b>Components:</b>		
Extra Slide-In Shelf: 12"D x 36"W	5.5	AS3612
Upright: 12"D x 84"H	15.3	AU1284
Back: 36"W x 49"H	18.0	AB3649
Base: 36"W x 3"H	1.4	AB36
<b>Accessories:</b>		
3" Sliding Parts Divider: 12"D x 3"H	1.2	ASD312
3" Sliding Parts Divider: 12"D x 3"H w/label holder Sky White	1.3	ASD312-LH
8" Sliding Parts Divider 12"D x 8"H w/label holder Sky White	2.1	ASD812-LH
Shelf Box: 10-7/8"D x 5-1/2"W x 4-5/8"H	2.2	ASB5410
Shelf Box Divider: 5"W x 4-3/8"H	0.3	ASBD5
Automotive Label Holder 36" W	0.6	ALH36

 Unit Color: Blue

 Back & Accessories Color: Sky White

Sliding Parts Divider shown with optional label holder



**Automotive Unit with Accessories**

# Tri-Boro Starter and Add-On Shelving Configurations



Cross Braces  
on both  
sides indicates  
starter



## 7 SHELVES

36" WIDE x 7' 1" HIGH

Depth	Starter Unit No.	Add On Unit No.
12"	OSB 85-1236-7	OAB 85-1236-7
15"	OSB 85-1536-7	OAB 85-1536-7
18"	OSB 85-1836-7	OAB 85-1836-7
24"	OSB 85-2436-7	OAB 85-2436-7
30"	OSB 85-3036-7	OAB 85-3036-7

### Unit Type

*B=Boxer*

*K=Klip-It*

*T=Thunderbolt*

### Unit Height

### Unit Depth

### Unit Width

### Number of Shelves

**OS**

## OPEN TYPE STARTER UNIT

Each OS unit is complete consisting of:

- Open Type - Starter Unit
- Any number of shelves
- Four uprights
- Two pair of side sway braces
- One pair of back sway braces
- Necessary nuts and bolts or clips

**OA**

## OPEN TYPE ADD-ON UNIT

Each OA unit is complete consisting of:

- Open Type - Add On Unit
- Any number of shelves
- Four uprights
- One pair of back sway braces
- One pair of side sway braces
- Necessary nuts and bolts or clips



Sides on both  
ends indicates  
starter



## 7 SHELVES

36" WIDE x 7' 1" HIGH

Depth	Starter Unit No.	Add On Unit No.
12"	CSB 85-1236-7	CAB 85-1236-7
15"	CSB 85-1536-7	CAB 85-1536-7
18"	CSB 85-1836-7	CAB 85-1836-7
24"	CSB 85-2436-7	CAB 85-2436-7
30"	CSB 85-3036-7	CAB 85-3036-7

**CS**

## CLOSED TYPE STARTER UNIT

Each CS unit is complete consisting of:

- Closed Type - Starter Unit
- Any number of shelves
- Four uprights
- Two closed sides
- One closed back
- One base
- Necessary nuts and bolts or clips

**CA**

## CLOSED TYPE ADD-ON UNIT

Each CA unit is complete consisting of:

- Closed Type - Add On Unit
- Any number of shelves
- Four uprights
- One closed side
- One closed back
- One base
- Necessary nuts and bolts or clips

# Tri-Boro Open & Closed Type Shelving Units



Note: Dimensions are for posts 1-1/2" on centers – Dimensions for posts on 1" centers will be different.

NOTE: Add 2" to the height of each unit for Thunderbolt,  
i.e. 6'1" Boxer & Klip-It = 6'3" Thunderbolt

Shelving Units Also Available With Offset Posts 1" On Centers (See Page 12) and Clip (See Page 20)

Unit Type  
B=Boxer  
K=Klip-It  
T=Thunderbolt  
O=Open  
C=Closed  
S=Starter  
A=Add-on

**6'1" HIGH OPEN TYPE • BOXER™ (BOX-SHELF): 22 GA., 20 GA. and 18 GA.**

UNIT NUMBERS ON THIS PAGE ARE 20 GA. – ADD L FOR 22 GA., X FOR 18 GA.

Note: 36" Deep Shelving Available.  
See price list for components

## 5 SHELVES 36" WIDE x 6' 1" HIGH

Depth	Starter Unit No.	Add On Unit No.
12"	OSB 73-1236-5	OAB 73-1236-5
15"	OSB 73-1536-5	OAB 73-1536-5
18"	OSB 73-1836-5	OAB 73-1836-5
24"	OSB 73-2436-5	OAB 73-2436-5
30"	OSB 73-3036-5	OAB 73-3036-5

## 42" WIDE x 6' 1" HIGH

Depth	Starter Unit No.	Add On Unit No.
12"	OSB 73-1242-5	OAB 73-1242-5
15"	OSB 73-1542-5	OAB 73-1542-5
18"	OSB 73-1842-5	OAB 73-1842-5
24"	OSB 73-2442-5	OAB 73-2442-5
30"	OSB 73-3042-5	OAB 73-3042-5

## 48" WIDE x 6' 1" HIGH

Depth	Starter Unit No.	Add On Unit No.
12"	OSB 73-1248-5	OAB 73-1248-5
15"	OSB 73-1548-5	OAB 73-1548-5
18"	OSB 73-1848-5	OAB 73-1848-5
24"	OSB 73-2448-5	OAB 73-2448-5
30"	OSB 73-3048-5	OAB 73-3048-5

## 6 SHELVES 36" WIDE x 6' 1" HIGH

Depth	Starter Unit No.	Add On Unit No.
12"	OSB 73-1236-6	OAB 73-1236-6
15"	OSB 73-1536-6	OAB 73-1536-6
18"	OSB 73-1836-6	OAB 73-1836-6
24"	OSB 73-2436-6	OAB 73-2436-6
30"	OSB 73-3036-6	OAB 73-3036-6

## 42" WIDE x 6' 1" HIGH

Depth	Starter Unit No.	Add On Unit No.
12"	OSB 73-1242-6	OAB 73-1242-6
15"	OSB 73-1542-6	OAB 73-1542-6
18"	OSB 73-1842-6	OAB 73-1842-6
24"	OSB 73-2442-6	OAB 73-2442-6
30"	OSB 73-3042-6	OAB 73-3042-6

## 48" WIDE x 6' 1" HIGH

Depth	Starter Unit No.	Add On Unit No.
12"	OSB 73-1248-6	OAB 73-1248-6
15"	OSB 73-1548-6	OAB 73-1548-6
18"	OSB 73-1848-6	OAB 73-1848-6
24"	OSB 73-2448-6	OAB 73-2448-6
30"	OSB 73-3048-6	OAB 73-3048-6

## 7 SHELVES 36" WIDE x 6' 1" HIGH

Depth	Starter Unit No.	Add On Unit No.
12"	OSB 73-1236-7	OAB 73-1236-7
15"	OSB 73-1536-7	OAB 73-1536-7
18"	OSB 73-1836-7	OAB 73-1836-7
24"	OSB 73-2436-7	OAB 73-2436-7
30"	OSB 73-3036-7	OAB 73-3036-7

## 42" WIDE x 6' 1" HIGH

Depth	Starter Unit No.	Add On Unit No.
12"	OSB 73-1242-7	OAB 73-1242-7
15"	OSB 73-1542-7	OAB 73-1542-7
18"	OSB 73-1842-7	OAB 73-1842-7
24"	OSB 73-2442-7	OAB 73-2442-7
30"	OSB 73-3042-7	OAB 73-3042-7

## 48" WIDE x 6' 1" HIGH

Depth	Starter Unit No.	Add On Unit No.
12"	OSB 73-1248-7	OAB 73-1248-7
15"	OSB 73-1548-7	OAB 73-1548-7
18"	OSB 73-1848-7	OAB 73-1848-7
24"	OSB 73-2448-7	OAB 73-2448-7
30"	OSB 73-3048-7	OAB 73-3048-7

**6' 1" HIGH CLOSED TYPE • BOXER™ (BOX-SHELF): 22 GA., 20 GA. and 18 GA.**

UNIT NUMBERS ON THIS PAGE ARE 20 GA. – ADD L FOR 22 GA., X FOR 18 GA.

## 5 SHELVES 36" WIDE x 6'1" HIGH

Depth	Starter Unit No.	Add On Unit No.
12"	CSB 73-1236-5	CAB 73-1236-5
15"	CSB 73-1536-5	CAB 73-1536-5
18"	CSB 73-1836-5	CAB 73-1836-5
24"	CSB 73-2436-5	CAB 73-2436-5
30"	CSB 73-3036-5	CAB 73-3036-5

## 42" WIDE x 6' 1" HIGH

Depth	Starter Unit No.	Add On Unit No.
12"	CSB 73-1242-5	CAB 73-1242-5
15"	CSB 73-1542-5	CAB 73-1542-5
18"	CSB 73-1842-5	CAB 73-1842-5
24"	CSB 73-2442-5	CAB 73-2442-5
30"	CSB 73-3042-5	CAB 73-3042-5

## 48" WIDE x 6' 1" HIGH

Depth	Starter Unit No.	Add On Unit No.
12"	CSB 73-1248-5	CAB 73-1248-5
15"	CSB 73-1548-5	CAB 73-1548-5
18"	CSB 73-1848-5	CAB 73-1848-5
24"	CSB 73-2448-5	CAB 73-2448-5
30"	CSB 73-3048-5	CAB 73-3048-5

## 6 SHELVES 36" WIDE x 6' 1" HIGH

Depth	Starter Unit No.	Add On Unit No.
12"	CSB 73-1236-6	CAB 73-1236-6
15"	CSB 73-1536-6	CAB 73-1536-6
18"	CSB 73-1836-6	CAB 73-1836-6
24"	CSB 73-2436-6	CAB 73-2436-6
30"	CSB 73-3036-6	CAB 73-3036-6

## 42" WIDE x 6' 1" HIGH

Depth	Starter Unit No.	Add On Unit No.
12"	CSB 73-1242-6	CAB 73-1242-6
15"	CSB 73-1542-6	CAB 73-1542-6
18"	CSB 73-1842-6	CAB 73-1842-6
24"	CSB 73-2442-6	CAB 73-2442-6
30"	CSB 73-3042-6	CAB 73-3042-6

## 48" WIDE x 6'1" HIGH

Depth	Starter Unit No.	Add On Unit No.
12"	CSB 73-1248-6	CAB 73-1248-6
15"	CSB 73-1548-6	CAB 73-1548-6
18"	CSB 73-1848-6	CAB 73-1848-6
24"	CSB 73-2448-6	CAB 73-2448-6
30"	CSB 73-3048-6	CAB 73-3048-6

## 7 SHELVES 36" WIDE x 6' 1" HIGH

Depth	Starter Unit No.	Add On Unit No.
12"	CSB 73-1236-7	CAB 73-1236-7
15"	CSB 73-1536-7	CAB 73-1536-7
18"	CSB 73-1836-7	CAB 73-1836-7
24"	CSB 73-2436-7	CAB 73-2436-7
30"	CSB 73-3036-7	CAB 73-3036-7

## 42" WIDE x 6' 1" HIGH

Depth	Starter Unit No.	Add On Unit No.
12"	CSB 73-1242-7	CAB 73-1242-7
15"	CSB 73-1542-7	CAB 73-1542-7
18"	CSB 73-1842-7	CAB 73-1842-7
24"	CSB 73-2442-7	CAB 73-2442-7
30"	CSB 73-3042-7	CAB 73-3042-7

## 48" WIDE x 6' 1" HIGH

Depth	Starter Unit No.	Add On Unit No.
12"	CSB 73-1248-7	CAB 73-1248-7
15"	CSB 73-1548-7	CAB 73-1548-7
18"	CSB 73-1848-7	CAB 73-1848-7
24"	CSB 73-2448-7	CAB 73-2448-7
30"	CSB 73-3048-7	CAB 73-3048-7

# Tri-Boro Open & Closed Type Shelving Units

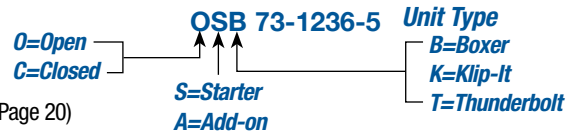


Note: Dimensions are for posts 1-1/2" on centers – Dimensions for posts on 1" centers will be different.

NOTE: Add 2" to the height of each unit for Thunderbolt,

i.e. 6'1" Boxer & Klip-It = 6'3" Thunderbolt

Shelving Units Also Available With Offset Posts 1" On Centers (See Page 12) and Clip (See Page 20)



Note: 36" Deep Shelving Available.  
See price list for components

## 7' 1" HIGH OPEN TYPE • BOXER™ (BOX-SHELF): 22 GA., 20 GA. and 18 GA.

UNIT NUMBERS ON THIS PAGE ARE 20 GA. – ADD L FOR 22 GA., X FOR 18 GA.

### 5 SHELVES 36" WIDE x 7' 1" HIGH

Depth	Starter Unit No.	Add On Unit No.
12"	OSB 85-1236-5	OAB 85-1236-5
15"	OSB 85-1536-5	OAB 85-1536-5
18"	OSB 85-1836-5	OAB 85-1836-5
24"	OSB 85-2436-5	OAB 85-2436-5
30"	OSB 85-3036-5	OAB 85-3036-5

### 42" WIDE x 7' 1" HIGH

Depth	Starter Unit No.	Add On Unit No.
12"	OSB 85-1242-5	OAB 85-1242-5
15"	OSB 85-1542-5	OAB 85-1542-5
18"	OSB 85-1842-5	OAB 85-1842-5
24"	OSB 85-2442-5	OAB 85-2442-5
30"	OSB 85-3042-5	OAB 85-3042-5

### 48" WIDE x 7' 1" HIGH

Depth	Starter Unit No.	Add On Unit No.
12"	OSB 85-1248-5	OAB 85-1248-5
15"	OSB 85-1548-5	OAB 85-1548-5
18"	OSB 85-1848-5	OAB 85-1848-5
24"	OSB 85-2448-5	OAB 85-2448-5
30"	OSB 85-3048-5	OAB 85-3048-5

### 6 SHELVES 36" WIDE x 7' 1" HIGH

Depth	Starter Unit No.	Add On Unit No.
12"	OSB 85-1236-6	OAB 85-1236-6
15"	OSB 85-1536-6	OAB 85-1536-6
18"	OSB 85-1836-6	OAB 85-1836-6
24"	OSB 85-2436-6	OAB 85-2436-6
30"	OSB 85-3036-6	OAB 85-3036-6

### 42" WIDE x 7' 1" HIGH

Depth	Starter Unit No.	Add On Unit No.
12"	OSB 85-1242-6	OAB 85-1242-6
15"	OSB 85-1542-6	OAB 85-1542-6
18"	OSB 85-1842-6	OAB 85-1842-6
24"	OSB 85-2442-6	OAB 85-2442-6
30"	OSB 85-3042-6	OAB 85-3042-6

### 48" WIDE x 7' 1" HIGH

Depth	Starter Unit No.	Add On Unit No.
12"	OSB 85-1248-6	OAB 85-1248-6
15"	OSB 85-1548-6	OAB 85-1548-6
18"	OSB 85-1848-6	OAB 85-1848-6
24"	OSB 85-2448-6	OAB 85-2448-6
30"	OSB 85-3048-6	OAB 85-3048-6

### 7 SHELVES 36" WIDE x 7' 1" HIGH

Depth	Starter Unit No.	Add On Unit No.
12"	OSB 85-1236-7	OAB 85-1236-7
15"	OSB 85-1536-7	OAB 85-1536-7
18"	OSB 85-1836-7	OAB 85-1836-7
24"	OSB 85-2436-7	OAB 85-2436-7
30"	OSB 85-3036-7	OAB 85-3036-7

### 42" WIDE x 7' 1" HIGH

Depth	Starter Unit No.	Add On Unit No.
12"	OSB 85-1242-7	OAB 85-1242-7
15"	OSB 85-1542-7	OAB 85-1542-7
18"	OSB 85-1842-7	OAB 85-1842-7
24"	OSB 85-2442-7	OAB 85-2442-7
30"	OSB 85-3042-7	OAB 85-3042-7

### 48" WIDE x 7' 1" HIGH

Depth	Starter Unit No.	Add On Unit No.
12"	OSB 85-1248-7	OAB 85-1248-7
15"	OSB 85-1548-7	OAB 85-1548-7
18"	OSB 85-1848-7	OAB 85-1848-7
24"	OSB 85-2448-7	OAB 85-2448-7
30"	OSB 85-3048-7	OAB 85-3048-7

## 7' 1" HIGH CLOSED TYPE • BOXER™ (BOX-SHELF): 22 GA., 20 GA. and 18 GA.

UNIT NUMBERS ON THIS PAGE ARE 20 GA. – ADD L FOR 22 GA., X FOR 18 GA.

### 5 SHELVES 36" WIDE x 7' 1" HIGH

Depth	Starter Unit No.	Add On Unit No.
12"	CSB 85-1236-5	CAB 85-1236-5
15"	CSB 85-1536-5	CAB 85-1536-5
18"	CSB 85-1836-5	CAB 85-1836-5
24"	CSB 85-2436-5	CAB 85-2436-5
30"	CSB 85-3036-5	CAB 85-3036-5

### 42" WIDE x 7' 1" HIGH

Depth	Starter Unit No.	Add On Unit No.
12"	CSB 85-1242-5	CAB 85-1242-5
15"	CSB 85-1542-5	CAB 85-1542-5
18"	CSB 85-1842-5	CAB 85-1842-5
24"	CSB 85-2442-5	CAB 85-2442-5
30"	CSB 85-3042-5	CAB 85-3042-5

### 48" WIDE x 7' 1" HIGH

Depth	Starter Unit No.	Add On Unit No.
12"	CSB 85-1248-5	CAB 85-1248-5
15"	CSB 85-1548-5	CAB 85-1548-5
18"	CSB 85-1848-5	CAB 85-1848-5
24"	CSB 85-2448-5	CAB 85-2448-5
30"	CSB 85-3048-5	CAB 85-3048-5

### 6 SHELVES 36" WIDE x 7' 1" HIGH

Depth	Starter Unit No.	Add On Unit No.
12"	CSB 85-1236-6	CAB 85-1236-6
15"	CSB 85-1536-6	CAB 85-1536-6
18"	CSB 85-1836-6	CAB 85-1836-6
24"	CSB 85-2436-6	CAB 85-2436-6
30"	CSB 85-3036-6	CAB 85-3036-6

### 42" WIDE x 7' 1" HIGH

Depth	Starter Unit No.	Add On Unit No.
12"	CSB 85-1242-6	CAB 85-1242-6
15"	CSB 85-1542-6	CAB 85-1542-6
18"	CSB 85-1842-6	CAB 85-1842-6
24"	CSB 85-2442-6	CAB 85-2442-6
30"	CSB 85-3042-6	CAB 85-3042-6

### 48" WIDE x 7' 1" HIGH

Depth	Starter Unit No.	Add On Unit No.
12"	CSB 85-1248-6	CAB 85-1248-6
15"	CSB 85-1548-6	CAB 85-1548-6
18"	CSB 85-1848-6	CAB 85-1848-6
24"	CSB 85-2448-6	CAB 85-2448-6
30"	CSB 85-3048-6	CAB 85-3048-6

### 7 SHELVES 36" WIDE x 7' 1" HIGH

Depth	Starter Unit No.	Add On Unit No.
12"	CSB 85-1236-7	CAB 85-1236-7
15"	CSB 85-1536-7	CAB 85-1536-7
18"	CSB 85-1836-7	CAB 85-1836-7
24"	CSB 85-2436-7	CAB 85-2436-7
30"	CSB 85-3036-7	CAB 85-3036-7

### 42" WIDE x 7' 1" HIGH

Depth	Starter Unit No.	Add On Unit No.
12"	CSB 85-1242-7	CAB 85-1242-7
15"	CSB 85-1542-7	CAB 85-1542-7
18"	CSB 85-1842-7	CAB 85-1842-7
24"	CSB 85-2442-7	CAB 85-2442-7
30"	CSB 85-3042-7	CAB 85-3042-7

### 48" WIDE x 7' 1" HIGH

Depth	Starter Unit No.	Add On Unit No.
12"	CSB 85-1248-7	CAB 85-1248-7
15"	CSB 85-1548-7	CAB 85-1548-7
18"	CSB 85-1848-7	CAB 85-1848-7
24"	CSB 85-2448-7	CAB 85-2448-7
30"	CSB 85-3048-7	CAB 85-3048-7

# Tri-Boro Open & Closed Type Shelving Units



Note: Dimensions are for posts 1-1/2\" on centers – Dimensions for posts on 1\" centers will be different.

NOTE: Add 2\" to the height of each unit for Thunderbolt,

i.e. 6'1\" Boxer & Klip-It = 6'3\" Thunderbolt

Shelving Units Also Available With Offset Posts 1\" On Centers (See Page 12) and Clip (See Page 20)

**8' 1\" HIGH OPEN TYPE • BOXER™ (BOX-SHELF): 22 GA., 20 GA. and 18 GA.**  
UNIT NUMBERS ON THIS PAGE ARE 20 GA. – ADD L FOR 22 GA., X FOR 18 GA.

OSB 73-1236-5 Unit Type  
B=Boxer  
K=Klip-It  
T=Thunderbolt  
O=Open  
C=Closed  
S=Starter  
A=Add-on

Note: 36\" Deep Shelving Available.  
See price list for components

## 5 SHELVES 36\" WIDE x 8' 1\" HIGH

Depth	Starter Unit No.	Add On Unit No.
12\"	OSB 97-1236-5	OAB 97-1236-5
15\"	OSB 97-1536-5	OAB 97-1536-5
18\"	OSB 97-1836-5	OAB 97-1836-5
24\"	OSB 97-2436-5	OAB 97-2436-5
30\"	OSB 97-3036-5	OAB 97-3036-5

## 42\" WIDE x 8' 1\" HIGH

Depth	Starter Unit No.	Add On Unit No.
12\"	OSB 97-1242-5	OAB 97-1242-5
15\"	OSB 97-1542-5	OAB 97-1542-5
18\"	OSB 97-1842-5	OAB 97-1842-5
24\"	OSB 97-2442-5	OAB 97-2442-5
30\"	OSB 97-3042-5	OAB 97-3042-5

## 48\" WIDE x 8' 1\" HIGH

Depth	Starter Unit No.	Add On Unit No.
12\"	OSB 97-1248-5	OAB 97-1248-5
15\"	OSB 97-1548-5	OAB 97-1548-5
18\"	OSB 97-1848-5	OAB 97-1848-5
24\"	OSB 97-2448-5	OAB 97-2448-5
30\"	OSB 97-3048-5	OAB 97-3048-5

## 6 SHELVES 36\" WIDE x 8' 1\" HIGH

Depth	Starter Unit No.	Add On Unit No.
12\"	OSB 97-1236-6	OAB 97-1236-6
15\"	OSB 97-1536-6	OAB 97-1536-6
18\"	OSB 97-1836-6	OAB 97-1836-6
24\"	OSB 97-2436-6	OAB 97-2436-6
30\"	OSB 97-3036-6	OAB 97-3036-6

## 42\" WIDE x 8' 1\" HIGH

Depth	Starter Unit No.	Add On Unit No.
12\"	OSB 97-1242-6	OAB 97-1242-6
15\"	OSB 97-1542-6	OAB 97-1542-6
18\"	OSB 97-1842-6	OAB 97-1842-6
24\"	OSB 97-2442-6	OAB 97-2442-6
30\"	OSB 97-3042-6	OAB 97-3042-6

## 48\" WIDE x 8' 1\" HIGH

Depth	Starter Unit No.	Add On Unit No.
12\"	OSB 97-1248-6	OAB 97-1248-6
15\"	OSB 97-1548-6	OAB 97-1548-6
18\"	OSB 97-1848-6	OAB 97-1848-6
24\"	OSB 97-2448-6	OAB 97-2448-6
30\"	OSB 97-3048-6	OAB 97-3048-6

## 7 SHELVES 36\" WIDE x 8' 1\" HIGH

Depth	Starter Unit No.	Add On Unit No.
12\"	OSB 97-1236-7	OAB 97-1236-7
15\"	OSB 97-1536-7	OAB 97-1536-7
18\"	OSB 97-1836-7	OAB 97-1836-7
24\"	OSB 97-2436-7	OAB 97-2436-7
30\"	OSB 97-3036-7	OAB 97-3036-7

## 42\" WIDE x 8' 1\" HIGH

Depth	Starter Unit No.	Add On Unit No.
12\"	OSB 97-1242-7	OAB 97-1242-7
15\"	OSB 97-1542-7	OAB 97-1542-7
18\"	OSB 97-1842-7	OAB 97-1842-7
24\"	OSB 97-2442-7	OAB 97-2442-7
30\"	OSB 97-3042-7	OAB 97-3042-7

## 48\" WIDE x 8' 1\" HIGH

Depth	Starter Unit No.	Add On Unit No.
12\"	OSB 97-1248-7	OAB 97-1248-7
15\"	OSB 97-1548-7	OAB 97-1548-7
18\"	OSB 97-1848-7	OAB 97-1848-7
24\"	OSB 97-2448-7	OAB 97-2448-7
30\"	OSB 97-3048-7	OAB 97-3048-7

**8' 1\" HIGH CLOSED TYPE • BOXER™ (BOX-SHELF): 22 GA., 20 GA. and 18 GA.**  
UNIT NUMBERS ON THIS PAGE ARE 20 GA. – ADD L FOR 22 GA., X FOR 18 GA.

## 5 SHELVES 36\" WIDE x 8' 1\" HIGH

Depth	Starter Unit No.	Add On Unit No.
12\"	CSB 97-1236-5	CAB 97-1236-5
15\"	CSB 97-1536-5	CAB 97-1536-5
18\"	CSB 97-1836-5	CAB 97-1836-5
24\"	CSB 97-2436-5	CAB 97-2436-5
30\"	CSB 97-3036-5	CAB 97-3036-5

## 42\" WIDE x 8' 1\" HIGH

Depth	Starter Unit No.	Add On Unit No.
12\"	CSB 97-1242-5	CAB 97-1242-5
15\"	CSB 97-1542-5	CAB 97-1542-5
18\"	CSB 97-1842-5	CAB 97-1842-5
24\"	CSB 97-2442-5	CAB 97-2442-5
30\"	CSB 97-3042-5	CAB 97-3042-5

## 48\" WIDE x 8' 1\" HIGH

Depth	Starter Unit No.	Add On Unit No.
12\"	CSB 97-1248-5	CAB 97-1248-5
15\"	CSB 97-1548-5	CAB 97-1548-5
18\"	CSB 97-1848-5	CAB 97-1848-5
24\"	CSB 97-2448-5	CAB 97-2448-5
30\"	CSB 97-3048-5	CAB 97-3048-5

## 6 SHELVES 36\" WIDE x 8' 1\" HIGH

Depth	Starter Unit No.	Add On Unit No.
12\"	CSB 97-1236-6	CAB 97-1236-6
15\"	CSB 97-1536-6	CAB 97-1536-6
18\"	CSB 97-1836-6	CAB 97-1836-6
24\"	CSB 97-2436-6	CAB 97-2436-6
30\"	CSB 97-3036-6	CAB 97-3036-6

## 42\" WIDE x 8' 1\" HIGH

Depth	Starter Unit No.	Add On Unit No.
12\"	CSB 97-1242-6	CAB 97-1242-6
15\"	CSB 97-1542-6	CAB 97-1542-6
18\"	CSB 97-1842-6	CAB 97-1842-6
24\"	CSB 97-2442-6	CAB 97-2442-6
30\"	CSB 97-3042-6	CAB 97-3042-6

## 48\" WIDE x 8' 1\" HIGH

Depth	Starter Unit No.	Add On Unit No.
12\"	CSB 97-1248-6	CAB 97-1248-6
15\"	CSB 97-1548-6	CAB 97-1548-6
18\"	CSB 97-1848-6	CAB 97-1848-6
24\"	CSB 97-2448-6	CAB 97-2448-6
30\"	CSB 97-3048-6	CAB 97-3048-6

## 7 SHELVES 36\" WIDE x 8' 1\" HIGH

Depth	Starter Unit No.	Add On Unit No.
12\"	CSB 97-1236-7	CAB 97-1236-7
15\"	CSB 97-1536-7	CAB 97-1536-7
18\"	CSB 97-1836-7	CAB 97-1836-7
24\"	CSB 97-2436-7	CAB 97-2436-7
30\"	CSB 97-3036-7	CAB 97-3036-7

## 42\" WIDE x 8' 1\" HIGH

Depth	Starter Unit No.	Add On Unit No.
12\"	CSB 97-1242-7	CAB 97-1242-7
15\"	CSB 97-1542-7	CAB 97-1542-7
18\"	CSB 97-1842-7	CAB 97-1842-7
24\"	CSB 97-2442-7	CAB 97-2442-7
30\"	CSB 97-3042-7	CAB 97-3042-7

## 48\" WIDE x 8' 1\" HIGH

Depth	Starter Unit No.	Add On Unit No.
12\"	CSB 97-1248-7	CAB 97-1248-7
15\"	CSB 97-1548-7	CAB 97-1548-7
18\"	CSB 97-1848-7	CAB 97-1848-7
24\"	CSB 97-2448-7	CAB 97-2448-7
30\"	CSB 97-3048-7	CAB 97-3048-7

# Tri-Boro Sturdi-Frame™ Steel Shelving - Offset Post Type

The special top and bottom shelves eliminate the need for back and side braces on these shelving units. Top and bottom shelves are nut and bolted into place. Intermediate shelves are clipped into place with Tri-Boro's 13 GA. compression clips. The loading of shelves further increases the locking action of the clips.

**Note: Nut and Bolt type post and additional intermediate shelves also available upon request.**



## 75" SFO • STURDI-FRAME™ (OFFSET POST TYPE): 18 GA.

### 5 SHELVES

#### 36" WIDE x 75" HIGH

Depth	Sturdi-Frame Unit No.	Wt.
18"	SF075-1836-5-18	84.0

#### 48" WIDE x 75" HIGH

Depth	Sturdi-Frame Unit No.	Wt.
18"	SF075-1848-5-18	94.0

#### 36" WIDE x 75" HIGH

Depth	Sturdi-Frame Unit No.	Wt.
24"	SF075-2436-5-18	102.0

#### 48" WIDE x 75" HIGH

Depth	Sturdi-Frame Unit No.	Wt.
24"	SF075-2448-5-18	124.0

### 6 SHELVES

#### 36" WIDE x 75" HIGH

Depth	Sturdi-Frame Unit No.	Wt.
18"	SF075-1836-6-18	94.0

#### 48" WIDE x 75" HIGH

Depth	Sturdi-Frame Unit No.	Wt.
18"	SF075-1848-6-18	114.0

#### 36" WIDE x 75" HIGH

Depth	Sturdi-Frame Unit No.	Wt.
24"	SF075-2436-6-18	115.0

#### 48" WIDE x 75" HIGH

Depth	Sturdi-Frame Unit No.	Wt.
24"	SF075-2448-6-18	144.0

### 7 SHELVES

#### 36" WIDE x 75" HIGH

Depth	Sturdi-Frame Unit No.	Wt.
18"	SF075-1836-7-18	106.0

#### 48" WIDE x 75" HIGH

Depth	Sturdi-Frame Unit No.	Wt.
18"	SF075-1848-7-18	131.0

#### 36" WIDE x 75" HIGH

Depth	Sturdi-Frame Unit No.	Wt.
24"	SF075-2436-7-18	130.0

#### 48" WIDE x 75" HIGH

Depth	Sturdi-Frame Unit No.	Wt.
24"	SF075-2448-7-18	162.0

## 87" SFO • STURDI-FRAME™ (OFFSET POST TYPE): 18 GA.

### 5 SHELVES

#### 36" WIDE x 87" HIGH

Depth	Sturdi-Frame Unit No.	Wt.
18"	SF087-1836-5-18	86.0

#### 48" WIDE x 87" HIGH

Depth	Sturdi-Frame Unit No.	Wt.
18"	SF087-1848-5-18	103.0

#### 36" WIDE x 87" HIGH

Depth	Sturdi-Frame Unit No.	Wt.
24"	SF087-2436-5-18	104.0

#### 48" WIDE x 87" HIGH

Depth	Sturdi-Frame Unit No.	Wt.
24"	SF087-2448-5-18	127.0

### 6 SHELVES

#### 36" WIDE x 87" HIGH

Depth	Sturdi-Frame Unit No.	Wt.
18"	SF087-1836-6-18	95.0

#### 48" WIDE x 87" HIGH

Depth	Sturdi-Frame Unit No.	Wt.
18"	SF087-1848-6-18	116.0

#### 36" WIDE x 87" HIGH

Depth	Sturdi-Frame Unit No.	Wt.
24"	SF087-2436-6-18	118.0

#### 48" WIDE x 87" HIGH

Depth	Sturdi-Frame Unit No.	Wt.
24"	SF087-2448-6-18	145.0

### 7 SHELVES

#### 36" WIDE x 87" HIGH

Depth	Sturdi-Frame Unit No.	Wt.
18"	SF087-1836-7-18	107.0

#### 48" WIDE x 87" HIGH

Depth	Sturdi-Frame Unit No.	Wt.
18"	SF087-1848-7-18	132.0

#### 36" WIDE x 87" HIGH

Depth	Sturdi-Frame Unit No.	Wt.
24"	SF087-2436-7-18	131.0

#### 48" WIDE x 87" HIGH

Depth	Sturdi-Frame Unit No.	Wt.
24"	SF087-2448-7-18	164.0

\* Eight shelf units available upon request . . . call Customer Service for details.

# Tri-Boro Specialty Shelving / Racks

## ARCHIVE SHELVING

All shelves are made from 20 or 18 gauge cold-rolled steel. Each side has triple return flanges for added strength.

NOTE: ADD SUFFIX X TO PART # FOR 18 GAUGE

Model Number	Size	20 GA. Wt.	18 GA. Wt.
AS1642	16" x 42"	9.5	12.5
AS2439	24" x 39"	12.4	16.5
AS3242	32" x 42"	17.0	23.8
AS3342	33" x 42"	17.6	24.4



**Other Tri-Boro Products:**  
**Shelving, Rivet-Rak™, Pallet Rack, Work Benches, Service Carts, Shop Desks & Much More!**



# Slotted Angle

## Easy to use, easy to build

Tri-Boro slotted angle helps you build an efficient framing system for a variety of uses from machine guards to hand rails. Slotted Angle is the most versatile, time and cost effective construction material available for building carts, ladders, benches, shelving, cases, racks or any other type of structure. Made of either 12 or 14 gauge roll-formed steel. Slotted Angle is finished in Gray Powder Coat Enamel or corrosion resistant galvanized finish.

### Easy to use... Just measure, cut and bolt together.

- Scientifically designed pattern of holes and slots are perfectly positioned for bolting pieces together at various angles without needing to drill holes.
- No special tools required but our slotted angle cutter cuts completely through with one fast easy stroke.
- Prime, cold rolled steel with painted or hot dipped, rust-resistant, galvanized finish.
- Available in 96", 120" and 144" lengths in 14 gauge and 12 gauge steel.
- 100% reusable. Even short pieces of angle can be used as a cleat to join together angle lengths into longer ones.
- Old outmoded structures can be unbolted and reassembled into new ones.

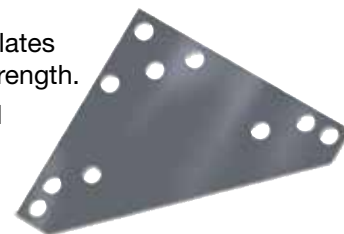
**The Ideal Material to Build Carts, Scaffolds, Benches, Platforms, Framing and So Much More in an Economical Way.**



## Slotted Angle Accessories

### Gusset Plates

- Galvanized steel corner plates give added rigidity and strength.
- 14 gauge cold rolled steel measures 6" x 6"



### Nuts and Bolts

- Zinc-plated 3/8" – 16 x 3/4" Hex head bolts and nuts available in boxes of 75 each

### Casters

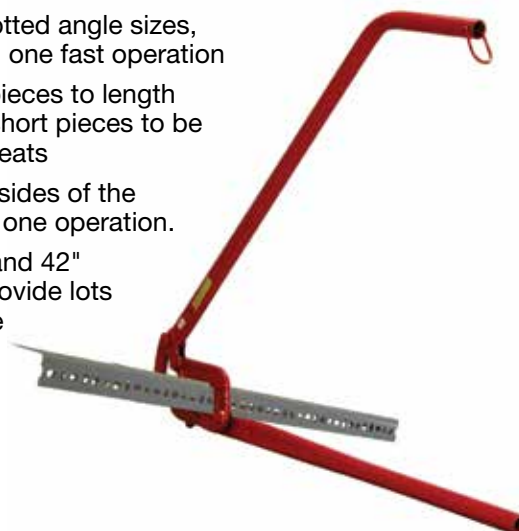
- Use heavy duty casters with slotted angle to make special trucks and carts
- Made from Poly-O polyurethane material
- Available as swivel, swivel with brake and rigid
- 5" x 1-1/4" casters are rated at 250 pounds each



Model Number	Size	Wt.
CS (Swivel Caster)	5" x 1-1/4"	2.0
CSL (Swivel Caster w/Side Brake)	5" x 1-1/4"	2.0
CR (Rigid Caster)	5" x 1-1/4"	2.0

## Slotted Angle Cutter

- Cuts all slotted angle sizes, burr free in one fast operation
- Cuts any pieces to length including short pieces to be used for cleats
- Cuts both sides of the L shape in one operation.
- Long 36" and 42" handles provide lots of leverage



# Slotted Angle Components & Specifications

## 14 Gauge – For Average Jobs

Cold-rolled high strength steel – recommended when extreme loads are not required

- Nominal size 1-1/2" x 1-1/2" and 1-1/2" x 2-1/2"
- Available in 8', 10' and 12' lengths, painted or galvanized

Painted Model No.	Galvanized Model No.	Gauge	Size	Pieces Per Bundle
SA15158	SA15158GAL	14	1-1/2" x 1-1/2" x 8'	10
SA151510	SA151510GAL	14	1-1/2" x 1-1/2" x 10'	10
SA151512	SA151512GAL	14	1-1/2" x 1-1/2" x 12'	10
SA25158	SA25158GAL	14	1-1/2" x 2-1/2" x 8'	10
SA251510	SA251510GAL	14	1-1/2" x 2-1/2" x 10'	10
SA251512	SA251512GAL	14	1-1/2" x 2-1/2" x 12'	10

## 12 Gauge – For Heavy Duty Jobs

Heavier weight cold-rolled high strength steel – recommended for use when greater strength and carrying capacity is required

- Nominal size 3" x 1 1/2"
- Available in 8', 10' and 12' lengths, painted or galvanized

Painted Model No.	Galvanized Model No.	Gauge	Size	Pieces Per Bundle
SA30158	SA30158GAL	12	1-1/2" x 3" x 8'	10
SA301510	SA301510GAL	12	1-1/2" x 3" x 10'	10
SA301512	SA301512GAL	12	1-1/2" x 3" x 12'	10



1-1/2" x 1-1/2" x 10' 0"



2-1/2" x 1-1/2" x 10' 0"

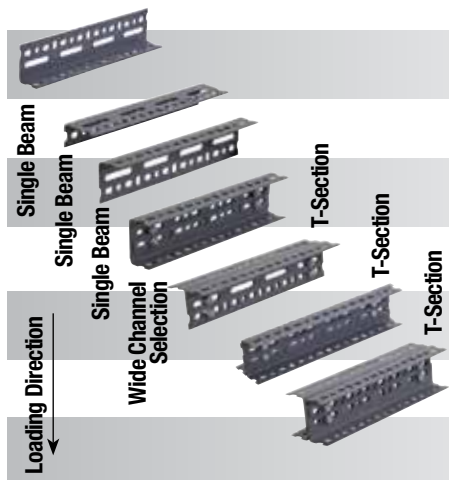


3" x 1-1/2" x 10' 0"

### Load Capacities When Slotted Angle is Used as Beams

(Horizontal Members)  
In Pounds Each Section

Combination sections are bolted together on 6" centers. Capacities based on uniformly distributed load. For concentrated loads, use half these figures.



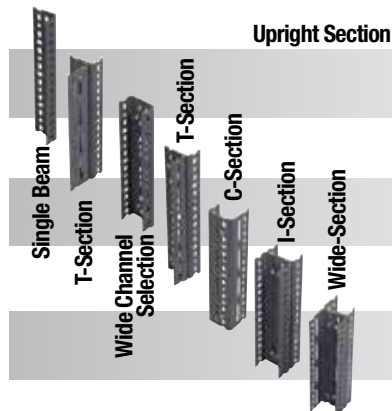
### SPAN

Size	GA	3 FT	4 FT	5 FT	6 FT	7 FT	8 FT	9 FT	10 FT
1 1/2" X 2 1/4"	14	331	230	–	–	–	–	–	–
1 1/2" X 3"	12	621	450	362	–	–	–	–	–
1 1/2" X 2 1/4"	14	441	316	210	–	–	–	–	–
1 1/2" X 3"	12	590	421	294	197	–	–	–	–
1 1/2" X 2 1/4"	14	772	527	397	306	235	173	–	–
1 1/2" X 3"	12	1,400	909	631	499	374	270	212	–
1 1/2" X 2 1/4"	14	1,418	1,070	761	613	466	362	284	257
1 1/2" X 3"	12	2,799	2,061	1,540	1,236	970	762	567	430
1 1/2" X 2 1/4"	14	1,860	1,365	1,018	806	657	540	455	352
1 1/2" X 3"	12	3,735	2,664	2,064	1,704	1,413	1,161	951	777
1 1/2" X 2 1/4"	14	2,621	1,884	1,491	1,227	1,022	851	727	633
1 1/2" X 3"	12	4,707	3,615	2,917	2,430	2,048	1,765	1,546	1,386
1 1/2" X 2 1/4"	14	3,146	2,232	1,799	1,477	1,266	1,119	1,004	900
1 1/2" X 3"	12	5,850	4,538	3,621	3,096	2,705	2,352	2,073	1,812

### Load Capacities When Slotted Angle is Used as Uprights

(Vertical Posts)  
In Pounds Each Section

To determine safe allowable load per column, use longest vertical space between horizontal braces.



### HEIGHT

Size	GA	3 FT	4 FT	5 FT	6 FT	7 FT	8 FT	9 FT	10 FT
1 1/2" X 2 1/4"	14	2,302	1,899	1,526	1,188	806	–	–	–
1 1/2" X 3"	12	3,308	2,775	2,165	1,602	1,251	900	–	–
1 1/2" X 2 1/4"	14	4,917	4,527	3,974	3,342	2,739	2,385	2,208	–
1 1/2" X 3"	12	7,482	6,807	6,080	5,214	4,235	3,396	3,317	2,214
1 1/2" X 2 1/4"	14	5,139	4,860	4,505	4,091	3,623	3,096	2,587	2,129
1 1/2" X 3"	12	8,069	7,734	7,329	6,897	5,871	5,277	4,622	3,902
1 1/2" X 2 1/4"	14	9,849	9,021	7,965	6,683	5,486	4,770	4,419	4,140
1 1/2" X 3"	12	14,963	13,622	12,168	10,434	8,481	6,795	6,273	4,428
1 1/2" X 2 1/4"	14	10,269	9,707	9,009	8,168	7,250	6,174	5,171	4,253
1 1/2" X 3"	12	16,565	15,998	15,237	14,382	13,062	12,254	11,012	9,567

**Note:** CAUTION: All loads given are based on uniform loading. Consideration must be given to concentrated loads, shock loads and methods using material handling

# Service Carts

## ECONOMY

- 500 pound capacity, 32" high
- Two 22 gauge tray shelves with 3" lip
- 5" x 1-1/4" casters, 2 rigid and 2 swivel
- Exclusive rail steel corner angles for strength

Model Number	Size	Wt.
ESC1630-2	16" x 30"	30
ESC2436-2	24" x 36"	40

### EXTRA TRAY SHELVES

Model Number	Size	Wt.
ETS1630L	16" x 30"	7
ETS2436L	24" x 36"	11

### THREE SHELF UNITS

Model Number	Size	Wt.
ESC1630-3	16" x 30"	37
ESC2436-3	24" x 36"	51

### FOUR SHELF UNITS

Model Number	Size	Wt.
ESC1630-4	16" x 30"	44
ESC2436-4	24" x 36"	62



Economy Service Cart  
3 Shelves



Economy Service Cart



Economy Service Cart  
4 Shelves

## HEAVY DUTY

- 1000 pound capacity, 35" high
- Two 18 gauge tray shelves with 2-1/4" lip
- 5" casters, 2 rigid and 2 swivel
- Exclusive rail steel corner angles for strength

Model Number	Size	Wt.
SC1630-2	16" x 30"	36
SC1836-2	18" x 36"	40
SC2436-2	24" x 36"	50
SC2448-2	24" x 48"	56

### EXTRA TRAY SHELVES

Model Number	Size	Wt.
ETS1630X	16" x 30"	9
ETS1836X	18" x 36"	10
ETS2436X	24" x 36"	17
ETS2448X	24" x 48"	20

### THREE SHELF UNITS

Model Number	Size	Wt.
SC1630-3	16" x 30"	45
SC1836-3	18" x 36"	50
SC2436-3	24" x 36"	67
SC2448-3	24" x 48"	76

### FOUR SHELF UNITS

Model Number	Size	Wt.
SC1630-4	16" x 30"	54
SC1836-4	18" x 36"	60
SC2436-4	24" x 36"	84
SC2448-4	24" x 48"	96



Heavy Duty Service Cart  
2 Shelves



Heavy Duty Service Cart  
3 Shelves

# Service Carts with Drawers



ESC1630D



ESC2436DD

## ECONOMY

- With heavy duty drawers SCD1851235.
- 500 lb. capacity, 32" high, 22 ga. tray shelves with 3" lip.
- 5" x 1-1/4" casters, 2 rigid and 2 swivel.
- Exclusive rail steel corner angles for strength.

Model Number	Size	No. of Drawers	Wt.
ESC1630D	16" x 30"	1	40
ESC2436D	24" x 36"	1	50
ESC2436DD	24" x 36"	2	60

*Note: Drawers can be attached to front or side of service carts.*

## CASTERS

- Use heavy duty casters with slotted angle to make special trucks and carts.
- Made from Poly-O polyurethane material
- Available as swivel, swivel with brake and rigid
- 5" x 1-1/4" casters are rated at 250 pounds each



Model Number	Size	Wt.
CS (Swivel Caster)	5" x 1-1/4"	2.0
CSL (Swivel Caster w/ Side Brake)	5" x 1-1/4"	2.0
CR (Rigid Caster)	5" x 1-1/4"	2.0

## DRAWERS

- These heavy duty drawers allow easy storage of smaller items in the cart unit.
- Drawers fit both economy and heavy duty carts.



Model Number	Size	Wt.
SCD1851235	18-1/2"D X 12"W X 3-1/2"H	10

# Mobile Shelf Trucks



## OPEN-TYPE UNIT

This basic model comes with one 18 gauge bottom tray shelf and (4) 20 gauge shelves. Two rigid and two swivel 5" x 1-1/4" casters allow for ease of mobility. Push handle adds increased maneuverability. Capacity 1000 lb. - evenly distributed wt.

Model Number	Size	Wt.
MST1836	18" x 36"	68
MST1842	18" x 42"	82
MST1848	18" x 48"	84
MST2436	24" x 36"	82
MST2442	24" x 42"	91
MST2448	24" x 48"	100



## TRAY SHELF UNIT

This unit comes complete with five 18 gauge tray shelves. Each tray shelf has a 2-1/4" lip.

Model Number	Size	Wt.
MST1836TS	18" x 36"	75
MST1842TS	18" x 42"	101
MST1848TS	18" x 48"	105
MST2436TS	24" x 36"	106
MST2442TS	24" x 42"	118
MST2448TS	24" x 48"	124
MST2460TS	24" x 60"	135

**NOTE: All Mobile Shelf Trucks are 57" Overall Height**  
Cart Drawers can be used on Tray Shelf Unit (See pg. 49)



Closed-Sides/Back Unit



Closed-Sides Unit

## CLOSED-SIDES UNIT

This unit has all the basic features but adds two side panels for greater stability. Sides offer increased protection for items during transportation.

Model Number	Size	Wt.
MST1836CS	18" x 36"	83
MST1842CS	18" x 42"	97
MST1848CS	18" x 48"	99
MST2436CS	24" x 36"	101
MST2442CS	24" x 42"	110
MST2448CS	24" x 48"	119

## CLOSED-SIDES BACK UNIT

This unit has all the basic features but adds two side panels as well as a back panel. Provides contained storage during transport.

Model Number	Size	Wt.
MST1836CSB	18" x 36"	98
MST1842CSB	18" x 42"	114
MST1848CSB	18" x 48"	118
MST2436CSB	24" x 36"	116
MST2442CSB	24" x 42"	127
MST2448CSB	24" x 48"	138



## BIN DIVIDER UNIT

This unit comes complete with two side panels and a back panel. Four 12" high bin dividers are included to allow for separation of items during transport.

(Additional dividers available upon request.)

Model Number	Size	Wt.
MST1836BD	18" x 36"	103
MST1842BD	18" x 42"	119
MST1848BD	18" x 48"	123
MST2436BD	24" x 36"	122
MST2442BD	24" x 42"	133
MST2448BD	24" x 48"	144

# Tri-Boro Bin Divider Units

## GENERAL FEATURES AND BENEFITS

- Three Heights: 39", 75" and 87"
- Three Depths: 12", 18" and 24"
- Clip Type or Nut & Bolt Type Available
- Label Holders and Bin Fronts Optional
- 20 and 18 Gauge Shelves Available
- Assembly Services Available



## TRI-BORO BIN DIVIDER UNITS BUILT TO LAST, DESIGNED TO BE USED.

When you need durable, convenient storage for small parts or supplies do what so many other facilities have done. These storage centers are found everywhere... service areas, parts departments, tool rooms, shipping rooms, warehouses, and assembly areas. The units provide easy and free access to all components and allow quick visual inspection of their contents.

Sturdy 20 gauge perforated flange shelves are reinforced by dividers that feature safety hemmed edges to avoid injury during retrieval of the bin contents. Rugged 14 gauge upright posts, punched on 1" centers, support a heavy load of small parts. The dividers can be moved, added to or removed at any time to accommodate changing storage needs.

Closed back and side panels keep the contents where they belong... on the shelf.

They provide additional rigidity, durability and security to the bin units. Bin divider modules can be used individually or in continuous configurations. Select from popular standard styles and sizes or have Tri-Boro custom design units to meet your very specific needs.

- ***Bin divider units feature base plates to create a finished look, and prevent small items, litter and debris from collecting underneath the unit.***
- ***Units shipped K.D. to save freight... assemble easily and quickly with Shelf Clips and Divider Clips. (Comes complete with all components ready for assembly.)***



Assembly Available

# 39" High Bin Divider Units

## Ideal for bench or table top applications



Tri-Boro Bin Divider Units are manufactured in a wide range of sizes. The shelf is a perforated flange type shelf with each side having a triple bend for added strength. The bin divider units are available in 12", 18" or 24" depths, in 1" O.C.



Units are available in clip or nut and bolt type.

All Tri-Boro steel components receive a rust resistant phosphatized cleaning for better paint adhesion and durability. A custom, quality blended powder coat paint is applied "Electro-Statically" and then baked on in a continuous curing oven for lasting durability and outstanding appearance.



Gray (standard)



Blue



Red



Sky White



Putty



Mist Gray



Black



Pearl White



Sand



**A. 6 Bin Shelf Unit - All Bins Are 18" x 12"**

Catalog No.	Height	Size D x W	Weight (lbs.)
BD39A6	39"	12" x 36"	59.0
BD39B6	39"	18" X 36"	73.0
BD39C6	39"	24" X 36"	88.0



**C.16 Bin Shelf Unit - All Bins Are 9" x 9"**

Catalog No.	Height	Size D x W	Weight (lbs.)
BD39A16	39"	12" x 36"	74.0
BD39B16	39"	18" X 36"	96.0
BD39C16	39"	24" X 36"	120.0



**D. 24 Bin Shelf Unit - All Bins Are 9" x 6"**

Catalog No.	Height	Size D x W	Weight (lbs.)
BD39A24	39"	12" x 36"	89.0
BD39B24	39"	18" X 36"	113.0
BD39C24	39"	24" X 36"	141.0

**B. 9 Bin Shelf Unit - All Bins Are 12" x 12"**



Catalog No.	Height	Size D x W	Weight (lbs.)
BD39A9	39"	12" x 36"	63.0
BD39B9	39"	18" X 36"	80.0
BD39C9	39"	24" X 36"	97.0



**E. 36 Bin Shelf Unit - All Bins Are 6" x 6"**

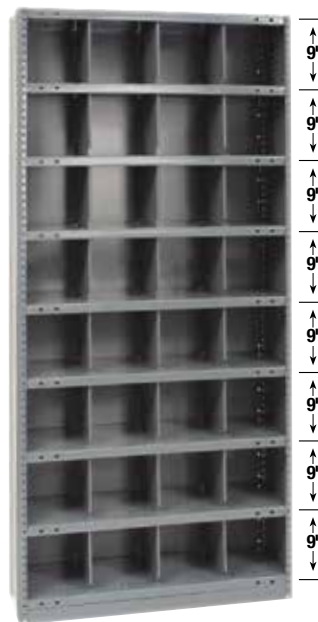
Catalog No.	Height	Size D x W	Weight (lbs.)
BD39A36	39"	12" x 36"	100.0
BD39B36	39"	18" X 36"	131.0
BD39C36	39"	24" X 36"	167.0

# 75" High Bin Divider Units

**Where ceiling height and overhead lighting is a factor**



**F. 12 Bin Shelf Unit -  
All Bins Are 18" x 12"**



**H. 32 Bin Shelf Unit -  
All Bins Are 9" x 9"**

Catalog No.	Height	Size D x W	Weight (lbs.)
BD75A12	75"	12" x 36"	108.0
BD75B12	75"	18" X 36"	133.0
BD75C12	75"	24" X 36"	161.0

Catalog No.	Height	Size D x W	Weight (lbs.)
BD75A32	75"	12" x 36"	151.0
BD75B32	75"	18" X 36"	194.0
BD75C32	75"	24" X 36"	245.0



**G. 18 Bin Shelf Unit -  
All Bins Are 12" x 12"**



**I. 72 Bin Shelf Unit -  
All Bins Are 6" x 6"**

Catalog No.	Height	Size D x W	Weight (lbs.)
BD75A18	75"	12" x 36"	115.0
BD75B18	75"	18" X 36"	143.0
BD75C18	75"	24" X 36"	178.0

Catalog No.	Height	Size D x W	Weight (lbs.)
BD75A72	75"	12" x 36"	193.0
BD75B72	75"	18" X 36"	251.0
BD75C72	75"	24" X 36"	311.0

# 87" High Bin Divider Units

**For large capacity in limited floor space**



**J. 14 Bin Shelf Unit -  
All Bins Are 18" x 12"**

Catalog No.	Height	Size D x W	Weight (lbs.)
BD87A14	87"	12" x 36"	121.0
BD87B14	87"	18" X 36"	154.0
BD87C14	87"	24" X 36"	181.0



**L. 17 Bin Shelf Unit -  
4 Bins 9" x 12",  
6 Bins 18" x 12",  
6 Bins 12" x 12",  
1 Bin 36" x 12"**

Catalog No.	Height	Size D x W	Weight (lbs.)
BD87A17	87"	12" x 36"	126.0
BD87B17	87"	18" X 36"	163.0
BD87C17	87"	24" X 36"	191.0



**K. 16 Bin Shelf Unit -  
6 Bins 9" x 12",  
5 Bins 18" X 12",  
4 Bins 18" X 9",  
1 Bin 36" X 18"**

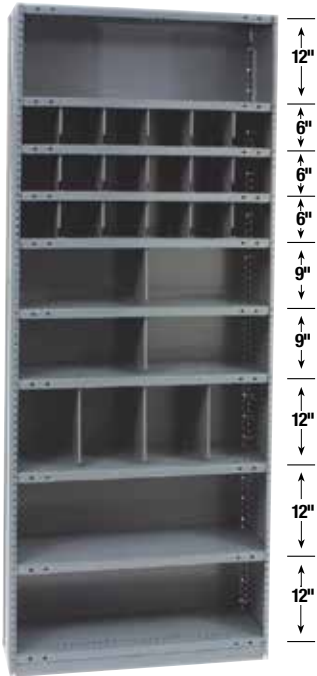
Catalog No.	Height	Size D x W	Weight (lbs.)
BD87A16	87"	12" x 36"	124.0
BD87B16	87"	18" X 36"	157.0
BD87C16	87"	24" X 36"	185.0



**M. 21 Bin Shelf Unit -  
All Bins Are 12" x 12"**

Catalog No.	Height	Size D x W	Weight (lbs.)
BD87A21	87"	12" x 36"	137.0
BD87B21	87"	18" X 36"	170.0
BD87C21	87"	24" X 36"	206.0

# 87" High Bin Divider Units Continued



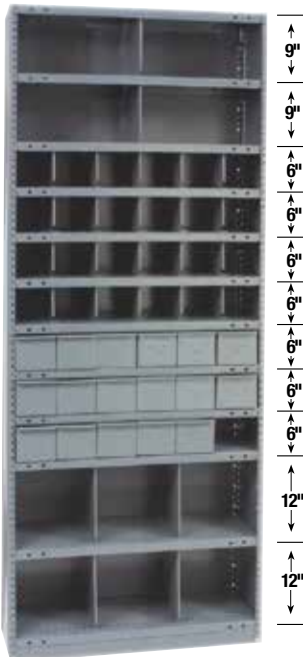
**N. 29 Bin Shelf Unit -**  
**18 Bins 6" x 6",**  
**4 Bins 18" x 9",**  
**4 Bins 9" x 12",**  
**3 Bins 36" x 12"**



**P. 35 Bin Shelf Unit -**  
**32 Bins 9" x 9",**  
**3 Bins 12" x 12"**

Catalog No.	Height	Size D x W	Weight (lbs.)
BD87A29	87"	12" x 36"	147.0
BD87B29	87"	18" X 36"	187.0
BD87C29	87"	24" X 36"	222.0

Catalog No.	Height	Size D x W	Weight (lbs.)
BD87A35	87"	12" x 36"	153.0
BD87B35	87"	18" X 36"	194.0
BD87C35	87"	24" X 36"	235.0



**O. 34 Bin Shelf Unit -**  
**6 Bins Are 12" x 12",**  
**4 Bins 18" x 9",**  
**24 Bins 6" x 6",**  
**18 Drawer Boxes 5-1/2" Wide**

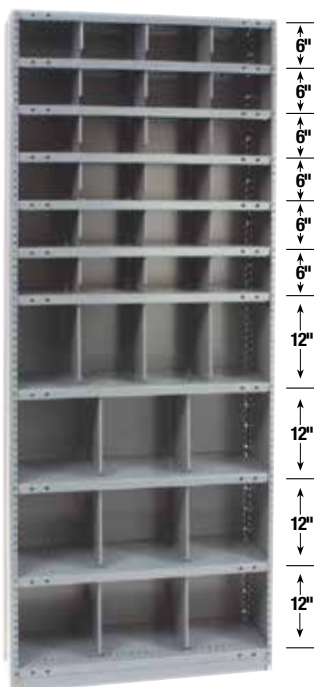


**Q. 36 Bin Shelf Unit -**  
**4 Bins 9" x 12",**  
**32 Bins 9" x 9"**

Catalog No.	Height	Size D x W	Weight (lbs.)
BD87A34	87"	12" x 36"	169.0
BD87B34	87"	18" X 36"	210.0
BD87C34	87"	24" X 36"	260.0

Catalog No.	Height	Size D x W	Weight (lbs.)
BD87A36	87"	12" x 36"	160.0
BD87B36	87"	18" X 36"	209.0
BD87C36	87"	24" X 36"	258.0

# 87" High Bin Divider Units Continued



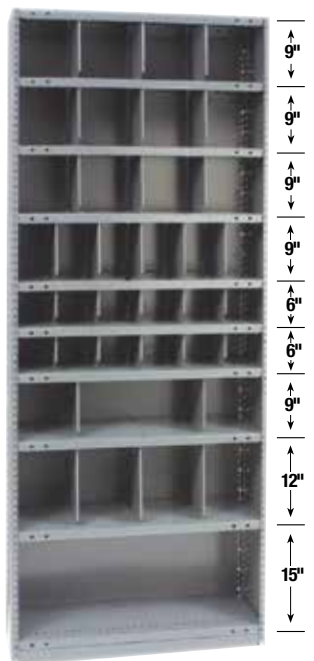
**R. 37 Bin Shelf Unit -**  
**24 Bins 9" x 6",**  
**9 Bins 12" x 12",**  
**4 Bins 9" x 12"**

Catalog No.	Height	Size D x W	Weight (lbs.)
BD87A37	87"	12" x 36"	162.0
BD87B37	87"	18" X 36"	212.0
BD87C37	87"	24" X 36"	251.0



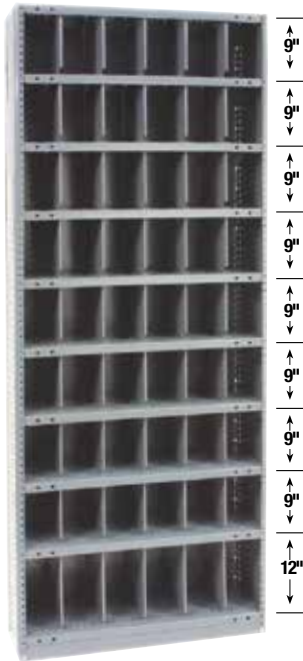
**T. 45 Bin Shelf Unit -**  
**24 Bins 6" x 6",**  
**12 Bins 9" x 9",**  
**6 Bins 12" x 12",**  
**3 Bins 12" x 9"**

Catalog No.	Height	Size D x W	Weight (lbs.)
BD87A45	87"	12" x 36"	171.0
BD87B45	87"	18" X 36"	221.0
BD87C45	87"	24" X 36"	265.0



**S. 38 Bin Shelf Unit -**  
**12 Bins 6" x 6",**  
**6 Bins 6" x 9",**  
**14 Bins 9" x 9",**  
**4 Bins 9" x 12",**  
**1 Bin 18" x 9",**  
**1 Bin 36" x 15"**

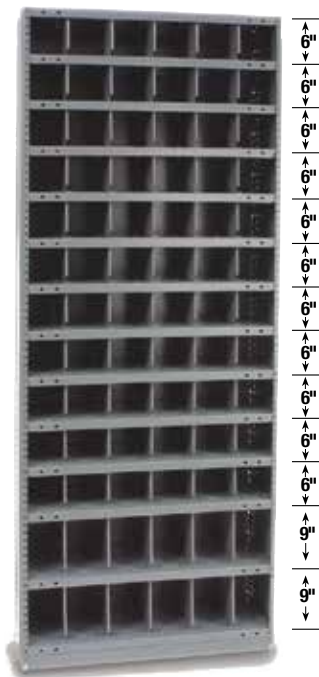
Catalog No.	Height	Size D x W	Weight (lbs.)
BD87A38	87"	12" x 36"	103.0
BD87B38	87"	18" X 36"	201.0
BD87C38	87"	24" X 36"	241.0



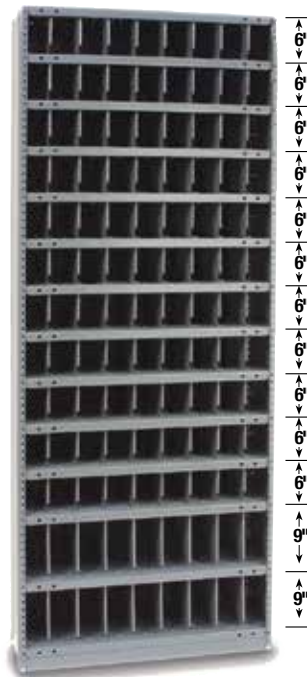
**U. 54 Bin Shelf Unit -**  
**48 Bins 6" x 9",**  
**6 Bins 6" x 12"**

Catalog No.	Height	Size D x W	Weight (lbs.)
BD87A54	87"	12" x 36"	179.0
BD87B54	87"	18" X 36"	242.0
BD87C54	87"	24" X 36"	304.0

# 87" High Bin Divider Units Continued



**V. 78 Bin Shelf Unit -  
66 Bins 6" x 6",  
12 Bins 9" x 9"**



**W. 117 Bin Shelf Unit -  
99 Bins 4" x 6",  
18 Bins 4" x 9"**

Catalog No.	Height	Size D x W	Weight (lbs.)
BD87A78	87"	12" x 36"	214.0
BD87B78	87"	18" X 36"	279.0
BD87C78	87"	24" X 36"	348.0

Catalog No.	Height	Size D x W	Weight (lbs.)
BD87A117	87"	12" x 36"	256.0
BD87B117	87"	18" X 36"	343.0
BD87C117	87"	24" X 36"	413.0

## Our Bin Divider Units Are Also Available In Custom Configurations

Although our broad range of stock products will provide solutions for nearly every bin application, there might be special instances where a little modification may make a substantial difference in day-to-day suitability.

We have the components necessary for many custom configurations. We also have a knowledgeable staff ready to assist you, our customer, in determining the best solution for your application.

Whether you need bin units or work benches you can depend on Tri-Boro for quality products, affordable pricing and fast turn-around times on any order.

## Shelf Drawer Units

If you're having problems storing small parts, then Tri-Boro has the solution. Our shelf drawer units allow for easy access to the smallest of parts. Each drawer may be sub-divided into compartments as small as 1". Drawers have built-in handles and label holders for ease of use. Unit is finished in gray. Nine other colors available for a small additional charge.



### 16 DRAWER UNIT

**Cabinet: 36"W x 27"H**

Drawers: 8-1/4"W x 4-5/8"H

Model Number	Depth	Wt.
SDU1612	12"	102
SDU1618	18"	130
SDU1624	24"	164

Dividers extra: MODEL NO. SBD 8



### 24 DRAWER UNIT

**Cabinet: 36"W x 39"H**

Drawers: 8-1/4"W x 4-5/8"H

Model Number	Depth	Wt.
SDU2412	12"	125
SDU2418	18"	178
SDU2424	24"	226

Dividers extra: MODEL NO. SBD 8



### 36 DRAWER UNIT

**Cabinet: 36"W x 39"H**

Drawers: 5-1/2"W x 4-5/8"H

Model Number	Depth	Wt.
SDU3612	12"	151
SDU3618	18"	197
SDU3624	24"	250

Dividers extra: MODEL NO. SBD 5



### 36 DRAWER UNIT

**Cabinet: 36"W x 75"H**

Drawers: 11"W x 4-5/8"H

Model Number	Depth	Wt.
SDU1480	12"	245
SDU1481	18"	320
SDU1482	24"	409

Dividers extra: MODEL NO. SBD 11



### 48 DRAWER UNIT

**Cabinet: 36"W x 75"H**

Drawers: 8-1/4"W x 4-5/8"H

Model Number	Depth	Wt.
SDU4812	12"	256
SDU4818	18"	335
SDU4824	24"	428

Dividers extra: MODEL NO. SBD 8



### 60 DRAWER UNIT

**Cabinet: 36"W x 75"H**

Upper Drawers: 5-1/2"W x 4-5/8"H

Lower Drawers: 8-1/4"W x 4-5/8"H

Model Number	Depth	Wt.
SDU6012	12"	269
SDU6018	18"	354
SDU6024	24"	453

Dividers extra: MODEL NO. SBD 5

MODEL NO. SBD 8



### 72 DRAWER UNIT

**Cabinet: 36"W x 75"H**

Upper Drawers: 5-1/2"W x 4-5/8"H

Model Number	Depth	Wt.
SDU7212	12"	283
SDU7218	18"	372
SDU7224	24"	477

Dividers extra: MODEL NO. SBD 5

**All Units  
Shipped  
Assembled**

# Tri-Boro's Steel Top Work Bench



**STYLE A**



**STYLE B**



**STYLE C**



**STYLE D**

## The Steel Work Surface

Tri-Boro presents the toughest work bench in the industry today. Steel top work bench stands up to the daily rigors of hard industrial use. Delivers maximum performance in maintenance rooms, assembly areas, or repair shops. Heavy gauge 1 3/4" thick steel construction ensures extra durability. Easily maintained and cleaned.

## Bench Features

- Legs feature double electrical knock outs front and rear.
- Available in either adjustable or flared leg models.
- All steel components receive a three stage Pre-Treatment Process for increased durability of the hard baked enamel finish.
- Style D work bench features a smooth gliding fully enclosed steel case drawer.

STYLE A - BASIC BENCH				STYLE B		STYLE C		STYLE D	
Includes Top, Legs & Stringer				Includes Top, Legs, Stringer & Shelf		Includes Top, Legs, Stringer, Back & End Stops, Shelf		Includes Top, Legs, Stringer, Riser, Drawer, Back & End Stops, Shelf	
Size D x W	Height	Catalog No.	Wt. (lbs)	Catalog No.	Wt. (lbs)	Catalog No.	Wt.(lbs)	Catalog No.	Wt.(lbs)
<b>STEEL TOP - Adjustable Leg</b>									
30" x 48"	29" - 33"	WBA3048SA	93	WBB3048SA	111	WBC3048SA	93	WBD3048SA	111
36" x 48"	29" - 33"	WBA3648SA	107	WBB3648SA	125	WBC3648SA	107	WBD3648SA	125
30" x 60"	29" - 33"	WBA3060SA	103	WBB3060SA	125	WBC3060SA	103	WBD3060SA	125
36" x 60"	29" - 33"	WBA3660SA	124	WBB3660SA	146	WBC3660SA	124	WBD3660SA	146
30" x 72"	29" - 33"	WBA3072SA	118	WBB3072SA	145	WBC3072SA	118	WBD3072SA	145
36" x 72"	29" - 33"	WBA3672SA	128	WBB3672SA	155	WBC3672SA	128	WBD3672SA	155

## Top Specifications

### STEEL BENCH TOP

Catalog No.	Size D x W	Wt. (lbs)
ST3048	30" x 48"	55
ST3648	36" x 48"	65
ST3060	30" x 60"	70
ST3660	36" x 60"	82
ST3072	30" x 72"	85
ST3672	36" x 72"	92

## Bench Legs

### ADJUSTABLE BENCH LEG

Catalog No.	Height	Depth	Wt. (lbs)
BL30	29"- 33"	30"	19.0
BL36	29"- 33"	36"	21.0
BL30L	33"- 39"	30"	19.0
BL36L	33"- 39"	36"	19.00
BL48L	33"- 39"	48"	23.00



## Work Bench Accessories



### Standard Bench Drawer for all Benches

General purpose drawer provides additional storage under any bench top.

Catalog No.	Top Depth	Size D x W	Wt. (lbs)
BD2016S-36	30" & 36"	20" x 16" x 5"	22.0



### Back and End Stops

Prevents parts from falling off bench. Sturdily built from heavy gauge steel.

Catalog No.	Height	Size D x W	Wt. (lbs)
BE3048	3"	30" x 48"	10.0
BE3648	3"	36" x 48"	11.0
BE3060	3"	30" x 60"	12.0
BE3660	3"	36" x 60"	13.0
BE3072	3"	30" x 72"	13.0
BE3672	3"	36" x 72"	14.0

### Stringer

Deep offset construction ensures maximum stability for Tri-boro's benches. Eliminates sway and adds rigidity.

Catalog No.	Length	Wt. (lbs)
ST48	48"	6.5
ST60	60"	8.0
ST72	72"	10.0



### Bench Riser

Utilize space above the work bench for convenient easy storage. Keep parts and tools organized and neat. Can be added to any bench at any time.

Catalog No.	From Bench Depth	Size H x D	Wt. (lbs)
BR48	48"	12" X 10 1/2"	16.0
BR60	60"	12" X 10 1/2"	18.0
BR72	72"	12" X 10 1/2"	21.0



### Lower Shelf

Heavy gauge steel shelf can be added to the bench at any time. Provides extra storage capacity. Can also be used as a foot rest.

Catalog No.	Length	Depth	Wt. (lbs)
LS48	48"	12"	18.0
LS60	60"	12"	22.0
LS72	72"	12"	27.0



# Tri-Boro's Shop Desks and Work Tables

## Shop Desks

Tri-Boro offers a superior line of shop desks. These sturdy desks were designed with daily use in mind – they'll help keep you organized and also offer convenient and secure storage. Our shop desks are ideal for shippers, checkers, dispatchers, mail rooms and receiving departments. The writing surface is sloped and smooth.

The three compartment work organizer is perfect for convenient access to supplies or documents. The center drawer glides smoothly on nylon rollers and has a built in grooved key-lock for security. The full size drawer measures 24"w x 27-14"d x 3-1/2"h. Each desk is manufactured from high grade steel and receives a three stage Pre-Treatment Process for added durability of the hard baked enamel finish.



### Cabinet Style Shop Desk

- Provides extra storage capacity and security.
- Double swinging doors feature 3-point locking device and durable handle.
- Includes 2 full lower shelves.
- Storage cabinet outside dimensions are 29"d x 34"w x 28-3/8"h. Opening with door frame measures 30-14"w x 27"h.

Catalog No.	Size D x W x H	Wt. (lbs)
SD3035-CS	30" x 34-1/2" x 53"	147



### Open Style Shop Desk

- Bottom shelf is recessed for extra leg room.
- Free standing unit.

Catalog No.	Size D x W x H	Wt. (lbs)
SD3035-OS	30" x 34-1/2" x 53"	94

# Rivet-Rak Steel Shelving



Tri-Boro delivers both ease of assembly and unobstructed access with RIVET-RAK. It is available in the widest range of sizes in the industry, and unlimited combinations that can satisfy a variety of requirements.



## Performance Features:

- Wide span capability
- Boltless, clipless construction
- Assembles in minutes
- Rivets lock into keyholes for added stability
- All components are powder coated
- Shelf sizes up to 48" x 96"
- Standard heights to 22' available
- Shelves are adjustable on 1-1/2" centers
- Various sizes and shelf capacities
- Custom configurations available
- Particle board shelves and wire decking available



**4 Rivet Angle Posts with a full perimeter of Double Rivet Angle beams top & bottom and Single Rivet Angle beams at intermediate levels - with particle board shelving.**



**4 Heavy Rivet Angle Posts with Double Rivet Angle beams at all levels - with particle board shelving**

## Order Specifications:

RIVET-RAK storage units are made up of posts, side-to-side beams and front-to-back beams. There are certain minimum requirements for beam use to ensure structural stability and safety. For example: all units must have 4 double rivet beams at top and bottom for stability. (2 side-to-side and 2 front-to-back, or full perimeter)

Follow these guidelines when specifying components:

- All units require a full perimeter of double rivet beams at top and bottom of unit.
- Single Rivet Light Beam (RBL) units 24" deep or less:
  - do not require single rivet beams front-to-back at each intermediate level in the unit.
  - 6' - 8' high must have one single rivet beam intermediate level front-to-back, located approximately in the middle of the unit.
  - 9' - 10' high must have two single rivet beam intermediate levels front-to-back, located to divide the height into 3 equal parts.
  - 11' - 16' high must have three intermediate levels; a full perimeter of double rivet beams in the middle plus intermediate levels of front-to-back single rivet beams in the upper and lower halves of unit.
- Single Rivet Light Beam (RBL) units 30" deep or greater:
  - All units must have single rivet beams front-to-back at every intermediate level: units 11' - 16' must have single rivet beams front-to-back at every intermediate level PLUS a full perimeter level of double rivet beams located approximately in the middle of the unit.
- Double Rivet Angle Beams and Double Rivet Channel Beams must have front-to-back beams at each beam level to provide decking support and ensure stability. When using Double Rivet Channel Beams from side-to-side, Double Rivet Angle Beams must be used from front-to-back.
- Rivet Tie Plates are recommended to tie adjacent angle post units together and to ensure structural stability. Tie plates should be used at the top and bottom of adjacent posts with additional tie plates spaced no more than 48" apart. Tie plates are not used on units with T posts.

## Post Load Table (CAPACITY POUNDS EACH)

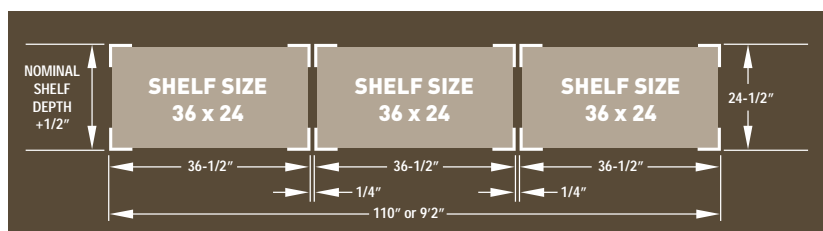
BEAM SPACING	STD. ANGLE POST	HVY. ANGLE POST
12"	2200	2812
18"	2104	2650
24"	2007	2488
30"	1920	2326
36"	1811	2165

## Beam Load Table (CAPACITY POUNDS PER PAIR)

	LENGTH	NO TIE BEAMS	ONE TIE BEAM
<b>SINGLE RIVET LIGHT BEAMS (RBL)</b>	24"	519	N/A
	30"	414	N/A
	32"	390	N/A
	36"	350	N/A
	42"	297	N/A
	48"	261	N/A
<b>DOUBLE RIVET Z-BEAMS (ZB)</b>	24"	1100	N/A
	32"	1000	N/A
	36"	900	N/A
	42"	800	N/A
<b>DOUBLE RIVET Z-HD BEAMS (ZB-HD)</b>	60"	600	600
	69"	550	550
	72"	500	500
<b>DOUBLE RIVET ANGLE BEAMS (RBA)</b>	30"	1150	N/A
	36"	928	N/A
	48"	773	1546
	60"	618	1236
	69"	537	1074
	72"	515	1030
	84"	441	882
	96"	386	772
<b>DOUBLE RIVET CHANNEL BEAMS (RBC)</b>	48"	N/A	2658
	60"	N/A	2128
	69"	N/A	1850
	72"	N/A	1773
	84"	N/A	1519
	96"	N/A	1330

## Planning Chart

Unit growth must be considered when designing a shelving layout. The actual outside dimensions of units are 1/2" greater than the nominal shelf size. A clearance of 1/4" must be left between units.



# Rivet-Rak Pre-Configured Units



## SPACEMASTER Rivet-Rak

**Spacemaster Rivet-Rak is best suited for light and medium applications**

Double Rivet Beam on top and bottom provide stability. Single Rivet Beams provide maximum vertical space on intermediate levels. Shelf sizes up to 36" x 48". Shelves adjust on 1-1/2" centers.

Double entry access as no diagonal brace is required. Boltless, clipless construction assembles in minutes.

<i>Rivet-Rak</i>	<i>Description</i>
RVR84-1236-6	RIVET-RACK 12" x 36" x 84" w/6 SHELVES
RVR84-1836-6	RIVET-RACK 18" x 36" x 84" w/6 SHELVES
RVR84-2436-6	RIVET-RACK 24" x 36" x 84" w/6 SHELVES
RVR84-3636-6	RIVET-RACK 36" x 36" x 84" w/6 SHELVES
RVR84-1248-6	RIVET-RACK 12" x 48" x 84" w/6 SHELVES
RVR84-1848-6	RIVET-RACK 18" x 48" x 84" w/6 SHELVES
RVR84-2448-6	RIVET-RACK 24" x 48" x 84" w/6 SHELVES
RVR84-3648-6	RIVET-RACK 36" x 48" x 84" w/6 SHELVES
RVR84-1236-7	RIVET-RACK 12" x 36" x 84" w/7 SHELVES
RVR84-1836-7	RIVET-RACK 18" x 36" x 84" w/7 SHELVES
RVR84-2436-7	RIVET-RACK 24" x 36" x 84" w/7 SHELVES
RVR84-3636-7	RIVET-RACK 36" x 36" x 84" w/7 SHELVES
RVR84-1248-7	RIVET-RACK 12" x 48" x 84" w/7 SHELVES
RVR84-1848-7	RIVET-RACK 18" x 48" x 84" w/7 SHELVES
RVR84-2448-7	RIVET-RACK 24" x 48" x 84" w/7 SHELVES
RVR84-3648-7	RIVET-RACK 36" x 48" x 84" w/7 SHELVES
RVR84-1236-8	RIVET-RACK 12" x 36" x 84" w/8 SHELVES
RVR84-1836-8	RIVET-RACK 18" x 36" x 84" w/8 SHELVES
RVR84-2436-8	RIVET-RACK 24" x 36" x 84" w/8 SHELVES
RVR84-3636-8	RIVET-RACK 36" x 36" x 84" w/8 SHELVES
RVR84-1248-8	RIVET-RACK 12" x 48" x 84" w/8 SHELVES
RVR84-1848-8	RIVET-RACK 18" x 48" x 84" w/8 SHELVES
RVR84-2448-8	RIVET-RACK 24" x 48" x 84" w/8 SHELVES
RVR84-3648-8	RIVET-RACK 36" x 48" x 84" w/8 SHELVES

**Custom configurations available**



## BULK MASTER Rivet-Rak

**Bulk Master Rivet-Rak is best suited for heavy duty applications**

	<i>Model#</i>	<i>Depth</i>	<i>Width</i>	<i>Height</i>
<b>48"</b> <i>WIDTH</i>	84-1848-4	18"	48"	84"
	84-1848-4T	WITH 1 TIE BEAM	48"	84"
	84-2448-4	24"	48"	84"
	84-2448-4T	WITH 1 TIE BEAM	48"	84"
	84-3648-4	36"	48"	84"
	84-3648-4T	WITH 1 TIE BEAM	48"	84"
	84-4848-4	48"	48"	84"
	84-4848-4T	WITH 1 TIE BEAM	48"	84"
<b>60"</b> <i>WIDTH</i>	84-1860-4	18"	60"	84"
	84-1860-4T	WITH 1 TIE BEAM	60"	84"
	84-2460-4	24"	60"	84"
	84-2460-4T	WITH 1 TIE BEAM	60"	84"
	84-3660-4	36"	60"	84"
	84-3660-4T	WITH 1 TIE BEAM	60"	84"
	84-4860-4	48"	60"	84"
	84-4860-4T	WITH 1 TIE BEAM	60"	84"
<b>72"</b> <i>WIDTH</i>	84-1872-4	18"	72"	84"
	84-1872-4T	WITH 1 TIE BEAM	72"	84"
	84-2472-4	24"	72"	84"
	84-2472-4T	WITH 1 TIE BEAM	72"	84"
	84-3672-4	36"	72"	84"
	84-3672-4T	WITH 1 TIE BEAM	72"	84"
	84-4872-4	48"	72"	84"
	84-4872-4T	WITH 1 TIE BEAM	72"	84"
<b>96"</b> <i>WIDTH</i>	84-1896-4	18"	96"	84"
	84-1896-4T	WITH 1 TIE BEAM	96"	84"
	84-2496-4	24"	96"	84"
	84-2496-4T	WITH 1 TIE BEAM	96"	84"
	84-3696-4	36"	96"	84"
	84-3696-4T	WITH 1 TIE BEAM	96"	84"
	84-4896-4	48"	96"	84"
	84-4896-4T	WITH 1 TIE BEAM	96"	84"

**Custom configurations available**

- Wide span capability
- Shelf sizes up to 48" x 96"
- Shelves are adjustable on 1-1/2" centers
- Standard heights to 22' available
- Other sizes & shelf capacities available
- Particle board shelves available.



# Rivet-Rak Components

## Posts



### Rivet Angle Post

13 gauge cold-rolled steel  
1-1/2" x 1-1/2" on 1-1/2" centers

MODEL NUMBER	HEIGHT INCHES	WEIGHT LBS.
RP36	36	1.9
RP48	48	2.6
RP60	60	3.2
RP72	72	3.8
RP84	84	4.5
RP96	96	5.1
RP108	108	5.8
RP120	120	6.4



### Heavy Rivet Angle Post

13 gauge cold-rolled steel  
1-7/8" x 1-7/8" on 1-1/2" centers

MODEL NUMBER	HEIGHT INCHES	WEIGHT LBS.
RPH72	72	4.8
RPH84	84	5.6
RPH96	96	6.4
RPH108	108	7.0
RPH120	120	8.0
RPH144	144	9.6
RPH168	168	11.2
RPH192	192	12.8
RPH216	216	14.4
RPH240	240	16
RPH264	264	17.6



### Rivet "T" Post

14 gauge cold-rolled steel  
3" x 1-1/2" on 1-1/2" centers  
(Used as a common post between rivet units)

MODEL NUMBER	HEIGHT INCHES	WEIGHT LBS.
RTP72	72	8.0
RTP84	84	9.5
RTP96	96	11.0
RTP108	108	12.0
RTP120	120	12.5
RTP144	144	14.0
RTP168	168	15.5
RTP192	192	17.0
RTP216	216	19.1
RTP240	240	21.2
RTP264	264	23.3

## Beams



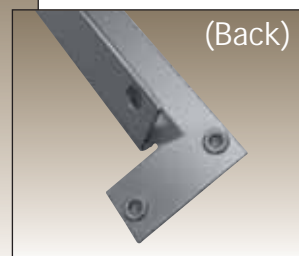
### Single Rivet Light Beam

14 gauge 3/4" x 1-1/4"

MODEL NUMBER	LENGTH INCHES	WEIGHT LBS.
RBL12	12	0.6
RBL15	15	0.7
RBL16	16	1.2
RBL18	18	0.9
RBL24	24	1.3
RBL30	30	1.6
RBL36	36	1.9
RBL42	42	2.2
RBL48	48	2.4



Please Contact your Tri-Boro representative for capacities and additional information.



### Double Rivet Angle Beam - Low Profile

14 gauge 1-1/8" x 2"

MODEL NUMBER	LENGTH INCHES	WEIGHT LBS.
RBALP18	18	1.2
RBALP24	24	1.3
RBALP30	30	1.6
RBALP36	36	1.9
RBALP48	48	2.9

# Rivet-Rak Components

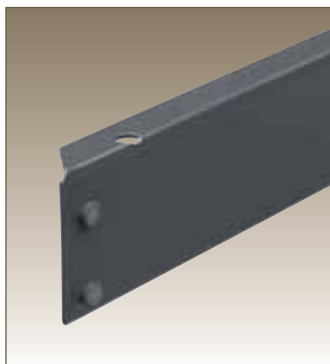
## Beams



**Double Rivet Z Beam & Double Rivet Z-HD Beam**

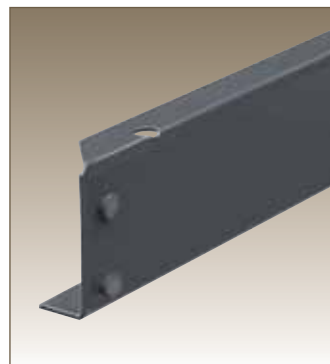
Z-BEAM: 14 gauge 3/4" x 2-5/8"

MODEL NUMBER	LENGTH INCHES	WEIGHT LBS.
ZB12	12	1.0
ZB15	15	1.6
ZB16	16	1.6
ZB18	18	1.6
ZB24	24	2.0
ZB30	30	2.6
ZB32	32	2.8
ZB36	36	3.0
ZB42	42	3.6
ZB48	48	4.0
Z-HD: 14 gauge 1-1/8" x 2-5/8"		
ZB54	54	5.0
ZB60	60	5.0
ZB69	69	5.9
ZB72	72	6.0



**Double Rivet Angle Beam**  
14 gauge 1" x 2-3/4"

MODEL NUMBER	LENGTH INCHES	WEIGHT LBS.
RBA12	12	1.0
RBA15	15	1.2
RBA16	16	1.5
RBA18	18	1.5
RBA24	24	2.0
RBA30	30	2.5
RBA36	36	2.9
RBA42	42	3.4
RBA48	48	3.9
RBA60	60	4.9
RBA69	69	5.6
RBA72	72	5.9
RBA84	84	6.8
RBA96	96	7.8



**Double Rivet Channel Beam**  
14 gauge 1" x 2-3/4"

MODEL NUMBER	LENGTH INCHES	WEIGHT LBS.
RBC48	48	5.6
RBC60	60	7.0
RBC69	69	8.1
RBC72	72	8.4
RBC84	84	9.8
RBC96	96	11.2

## Rivet-Rak Decking Options

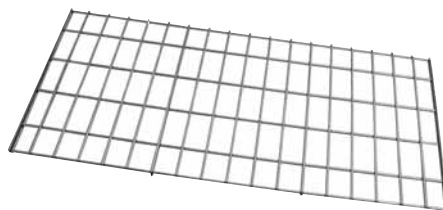


### Particle Board Shelves

Our particle board decking is 5/8" thick and pre-cut to size for use with Tri-Boro rivet rack. For general purpose and record storage applications.

(See price list for all sizes)

PARTICLE BOARD SITS FLUSH WITH TOP PROFILE OF BEAM ON SINGLE RIVET LIGHT BEAM AND DOUBLE RIVET Z BEAMS.



### Rivet-Rak Wire Decking

Color: Gray

#### Popular Sizes:

MODEL NUMBER	D x W (inches)
WD1836	18 X 36
WD1848	18 X 48
WD2448	24 X 48
WD2472	24 X 72
WD3069	30 X 69
WD3636	36 X 36
WD3648	36 X 48
WD3672	36 X 72
WD4848	48 X 48
WD4872	48 X 72

**Note: Contact your Tri-Boro representative for F.O.B. point.**

### Rivet-Rak Solid Steel Deck and Perf Deck

(see page 45)



# Rivet-Rak Accessories



14 gauge 1-1/8" x 2-1/2"

MODEL NUMBER	LENGTH INCHES	WEIGHT LBS.
RTB12	12	1.4
RTB15	15	1.6
RTB16	16	1.8
RTB18	18	1.8
RTB24	24	2.3
RTB30	30	2.7
RTB36	36	3.2
RTB42	42	3.6
RTB48	48	4.1



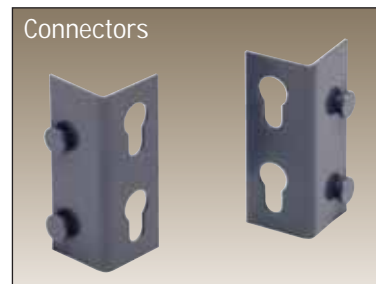
14 gauge 1-1/8" x 2-1/2"

MODEL NUMBER	LENGTH INCHES	WEIGHT LBS.
ZTB18	18	1.5
ZTB24	24	1.9
ZTB30	30	2.3
ZTB32	32	2.6
ZTB36	36	2.9
ZTB42	42	3.4
ZTB48	48	3.9



13 gauge channel formed steel. One additional return flange on top for added strength - end tabs are flanged at 90° angles with holes punched on 1-1/2" centers

MODEL NUMBER	LENGTH INCHES	WEIGHT LBS.
RRAB30	30	4.6
RRAB36	36	5.4
RRAB42	42	6.3
RRAB48	48	7.1



**Model No: RRC-L**  
**Rivet-Rak**  
**Connector-Left**  
**Weight: 0.5**

**Model No: RRC-R**  
**Rivet-Rak**  
**Connector-Right**  
**Weight: 0.5**

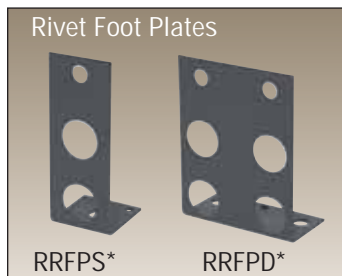


**Rivet Wall Mount 3"**  
**Model No: RRWM-3**  
**Weight: 0.8 lbs.**

**Rivet Wall Mount 9"**  
**Model No: RRWM-9**  
**Weight: 2.3 lbs.**



**Model No: RTP**  
**Weight: 0.2**  
Lock posts together to join two or more racks side by side.



**RRFPS\***  
**Model No:**  
**RRFPS**  
**Weight: 0.2 lbs.**

**RRFPD\***  
**Model Number:**  
**RRFPD**  
**Weight: 0.4 lbs.**

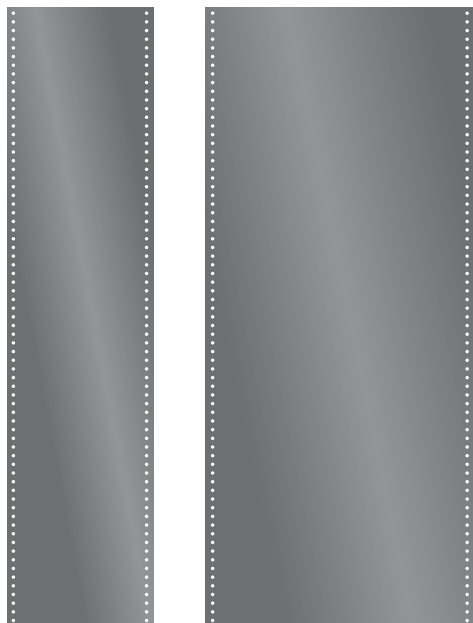


**Model No: RSP**  
**Weight: 0.5 lbs.**  
**1" x 1" x 5-1/2"**



**\* These Accessories require hardware:**  
**Model No. HB-63 (page 12)**

## Side and Back Panels



Made of cold-rolled steel. Punched along edges with 3/8" dia. holes on 1" centers for attaching to front and rear post.

MODEL NUMBER	DESCRIPTION	DIMENSIONS	WEIGHT LBS.
RRB1572	Rivet Rak Side Panel	15"x 72" for 15"W Unit	8.0
RRB2449	Rivet Rak Side Panel	24-5/16-48-1/2 20 GA	8.9
RRB2484	Rivet Rak Side Panel	24-5/16-84 20 GA	15.0
RRB3648	Rivet Rak Back Panel	35.312 -48 20 GA	18.3
RRB3772	Rivet Rak Side Panel	32-72 20 GA	28.7
RRB2849	Rivet Rak BackPanel	28-5/16-49-1/2 20 GA	17.6
RRB4984	Rivet Rak Back Panel	48-5/16-84 20 GA	
RRB3696	Rivet Rak Back Panel	36"x 96" for 36"W Unit	36.5
RRB4850	Rivet Rak Back Panel	48"x 50" for 48"W Unit	25.4
RRB7250	Rivet Rak Back Panel	72"x 50" for 72"W Unit	38.1

# Specialty Rivet-Rak

**Specialty Rivet-Rak Units are preconfigured, easy to assemble, strong and durable.**

These units are constructed with boltless rivet-rak components. Units are designed for a wide variety of applications. Horizontal surfaces are generally created with particle board. Because they are built from Tri-Boro Rivet-Rak components these units require no sway bracing allowing easy access. All shelves are adjustable on 1-1/2" centers and are simple to assemble and flexible.

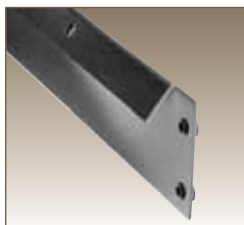
## Used In Many Applications:

- Industrial • Office • Commercial Record Storage
- Warehouse • Work Stations

Select from our standard units and sizes, or have Tri-Boro custom design units to meet your specific needs. Particle board is the standard top surface for these specialty racks, however they can be outfitted with other surfaces. Contact us for further information.



**Tire Rack**  
Specialized sloped shelves hold tires firmly on rack. Tire rack can be bolted to wall for additional stability. Row supports available for back to back rows.



**Model Number** TR126084  
**Size D x W x H** 12" x 60" x 84"



**Rivet Wall Support**  
RWS(length in inches) -L or -R  
**Example: RWS12-L**  
Available lengths:  
9", 12", 18", 24"

## Tire Rack Accessories:



**Rivet-Rak Muffler Holder**  
Model Number: RRMUFFH  
Size: 12"D X 36"W

**Rivet-Rak Belt Holder**  
Model Number: RRBELTH  
Size: 18"D X 12"W



**Work Center**  
**Model Number** WC309836  
**Size D x W x H** 30" x 98" x 36"



**Packaging Bench**  
**Model Number** PB367236  
**Size D x W x H** 36"x 72" x 36"



**Record Storage**  
**Model Number** RS326984  
**Size D x W x H** 32" x 69" x 84"



**Record Storage**  
**Model Number** RS164284  
**Size D x W x H** 16" x 42" x 84"



**Office Unit**  
**Model Number** OF183684  
**Size D x W x H** 18" x 36" x 84"

# Solid Deck / Perf Deck\* for Rivet-Rak™ and Pallet Rack

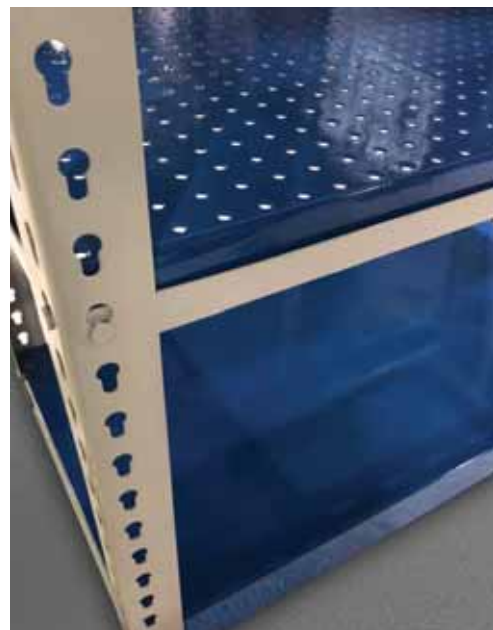
## Perf Deck

- A great alternative to wire deck
- Product slides on & off easily
- Totally flat and smooth storage surface
- Open space shelves for air and sprinkler water flow
- Perf Deck panels drop into the step\* on pallet rack beams
- Rivet-Rak shelving panels drop easily into Rivet-Rak beams
- Can be used with Tri-Boro solid steel deck
- A choice of finishes and opening styles is available

Deck panels come in powder coated standard gray.  
Other colors available at additional charge.



Perf Deck  
and Solid  
Deck for  
Pallet  
Rack



Rivet-Rak  
Perf Shelf



Rivet-Rak  
Perf Shelf  
For Light Beam  
and Z-Beam



Rivet-Rak  
Deck Panel  
For Angle Beam  
and Channel  
Beam

50% Open  
Perf Deck



NOTE: Can be perforated

## Rivet-Rak Steel Deck \*\*

Color: Gray 16 GA.

### Popular Sizes:

MODEL NUMBER	D x W (inches)	WEIGHT LBS.
RRDP1836	18 X 36	14.2
RRDP1848	18 X 48	18.9
RRDP1860	18 X 60	23.6
RRDP1872	18 X 72	28.3
RRDP1896	18 X 96	37.7
RRDP2184	21 X 84	37.3
RRDP2436	24 X 36	17.9
RRDP2448	24 X 48	23.8
RRDP2460	24 X 60	29.7
RRDP2472	24 X 72	35.7
RRDP2496	24 X 96	47.5
RRDP3648	36 X 48	33.6
RRDP3660	36 X 60	42.0
RRDP3672	36 X 72	50.4
RRDP3696	36 X 96	67.1
RRDP4848	48 X 48	44.4
RRDP4884	48 X 84	75.9

NOTE: 96" WIDE WILL BE MADE OF (2) 48" DECK PANELS

NOTE: ADD SUFFIX 'S' TO PART NUMBER FOR SOLID DECK  
OR 'P' FOR PERF DECK

\*\*NOTE: PART NUMBERS SHOWN ARE ANGLE/CHANNEL BEAM DECK.  
PLEASE CONTACT CUSTOMER SERVICE FOR ORDERING INFO ON LIGHT  
BEAM/Z-BEAM DECK.

## Pallet Rack Steel Deck

Color: Gray

### Popular Sizes:

MODEL NUMBER	D x W (inches)	WEIGHT LBS.
DP1212-18	12 X 12	2.6
DP1218-18	18 X 12	3.89
DP1224-18	24 X 12	5.08
DP1230-18	30 X 12	6.57
DP1236-16	36 X 12	9.82
DP1242-16	42 X 12	12
DP1248-16	48 X 12	13.8
DP1254-16	54 X 12	15.6
DP1260-16	60 X 12	17.5

NOTE: ADD SUFFIX 'S' TO PART  
NUMBER FOR SOLID DECK

ADD SUFFIX 'P' FOR PERF DECK

ADD SUFFIX 'F' FOR 50% OPEN  
PERF DECK

Perforation patterns shown do not meet current NFPA codes.

\*Perf Deck is designed for use with Tri-Boro brand pallet rack or Rivet-Rak™.

Please consult with Customer Service to check compatability if you intend to use it with another rack brand.

# Roll Formed Pallet Rack



Obtain warehouse racking and shelving products on one order from ONE SOURCE - Tri-Boro Storage Products.


We manufacture our own roll-formed pallet rack to the same standards of quality and performance you've come to expect from our other storage products. Tri-Boro now offers the added value and logistical advantage of single source integration for all your warehousing and storage needs.

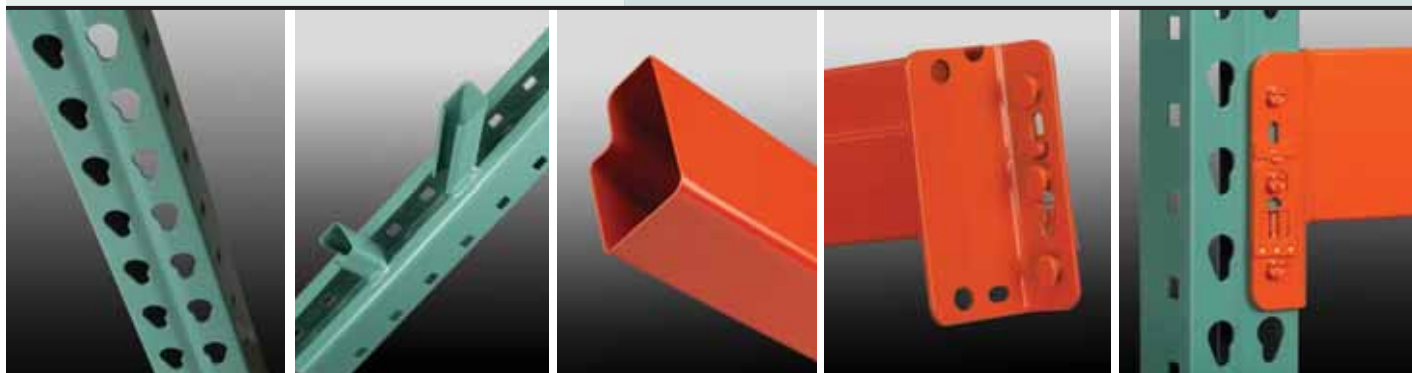


- **One Source for Industrial Steel Shelving and Warehouse Rack**
- **Quick Ship Program**
- **100% USA Made**









## Features & Benefits

Single Rib Column Design:	Adds to strength and rigidity.
Tapered Keyhole Slots:	Pulls beam against frame for maximum stability.
Return bends on all open-back design frame members:	No sharp exposed edges - Adds to strength and rigidity.
Interchangeable product design:	TRI-BORO rack is compatible with most "teardrop" design pallet racks.
One-piece tube seamed step beams:	No exposed welds, which can cause pallet hang-ups. Safer for retail applications.
High strength tapered studs on beam connector plates:	Extra safe connection and snug fit. Less stress on components than slot and hook connections.
Integral beam connector safety locks:	Self-engaging design is secure, easy to use and allows for quick repositioning of beams. Factory installed - replaceable.
Quick & Easy Assembly:	Saves time and money. No loose hardware.
 Powder coat baked finish:	Durable, scratch resistant high gloss finish. Ideal for many food and industrial corrosive applications.
Full range of capacities and sizes from hand-loaded bulk rack to your heaviest applications:	One source for all your storage needs. Complete turn-key services available through a qualified network of full line material handling distributors.
Stock rack for immediate requirements:	Warehouses and stocking dealers around the country with a large selection of popular size racks.
Factory Support:	Large enough to handle any size job. Small enough for the personal services that most companies cannot provide.



# Pallet Rack Specifications

## FRAME CAPACITIES (LBS.)

MAXIMUM VERTICAL BEAM SPACING	F14 *	F20	F24	F25	F30	F35
	 3" x 1 5/8" COL.	 3" x 2 1/2" COL.	 3" x 2 1/2" COL.	 3" x 3" COL.	 3" x 3" COL.	 3" x 3" COL.
36"	17437	23906	28005	27798	31162	38909
42"	16400	22610	26364	26020	29481	36692
48"	15220	21149	24530	23200	27594	34218
54"	13937	19559	22557	21040	25549	31556
60"	12594	17884	20502	19163	23398	28775
66"	11232	16167	18420	17145	21194	25948
72"	9870	14426	16332	15147	18965	23101
78"	8683	12794	14406	13030	16842	20448
84"	7679	11396	12771	11916	15019	18183
90"	6827	10195	11379	10529	13449	16243
96"	6101	9160	10188	9533	12095	14577

## Notes:

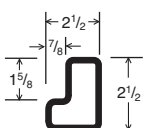
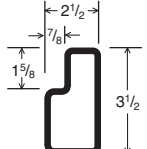
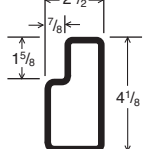
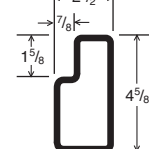
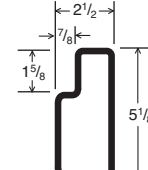
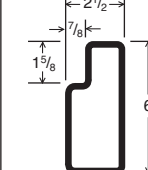
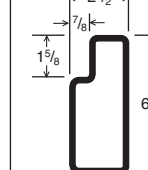
- Based on RMI 2019 Specification for the Design, Testing and Utilization of Industrial Steel Storage Racks.
- "Spacing" is distance from floor to top of first beam level. If maximum opening is not floor level, "Spacing" is distance from top of beam to top of beam + 1".
- Applicable for non-seismic use only. Building codes may require otherwise.
- Capacities are for frame components only. Overall rack system configuration is the responsibility of others.
- Contact your Tri-Boro representative for design assistance or for applications not covered by above.
- Where the bottom portion of frames are exposed to potential minor impacts from forklift trucks or moving equipment, consideration should be given to purchasing one of the optional impact protection devices. Ask your Tri-Boro representative for a recommendation.
- \*F14 Frame capacity: 4,000 lbs. max per beam level.

SPECIAL ORDER ITEMS -  
MINIMUM RUN  
REQUIREMENTS APPLY.  
Please contact your Tri-Boro  
representative for more  
information.

## ROLL-FORMED FRAME PART NUMBER (EXAMPLE: 3" x 2 1/2" x 42" x 192")

F	20	42	192
ROLL- FORMED FRAME	CAPACITY MODEL	DEPTH IN INCHES	HEIGHT IN INCHES

## ROLL-FORMED STEP BEAM CAPACITIES (LBS. PER PAIR)

BEAM LENGTH (INCHES)	BEAM PROFILE	MODEL NO.	SB2500 4" CONNECTOR (2 STUD)	SB3500 6" CONNECTOR (3 STUD)	SB4125 6" CONNECTOR (3 STUD)	SB4625 6" CONNECTOR (3 STUD)	SB5125 6" CONNECTOR (3 STUD)	SB6000 6" CONNECTOR (3 STUD)	SB6500 8" CONNECTOR (4 STUD)
48"			3836	6910	8775	10597	12000	12000	12000
72"			2532	4743	5975	7186	9029	12000	12000
84"			2022	4485	5734	6883	8632	12000	12000
96"			1505	3483	5028	6067	7596	10583	12000
102"			1310	3106	4476	5731	7168	9975	11825
108"			1146	2788	4011	5309	6788	9434	11206
120"			885	2283	3276	4330	5887	8512	10152
144"					2303	3038	4120	6511	8482

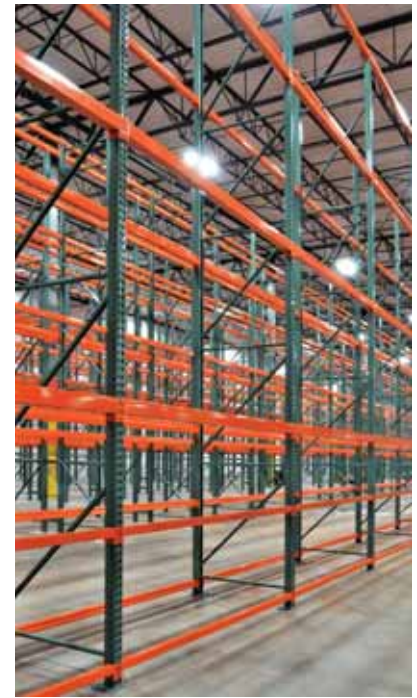
## Notes:

- Based on RMI 2019 Specification for the Design, Testing and Utilization of Industrial Steel Storage Racks.
- Load Capacities are based on uniformly distributed product load per pair of beams.
- Deflection is based on product load only, and is limited to L(span)/180.
- Spans from 48" to 80" designed for 25% impact from placing 1 load per shelf.
- Spans from 82" to 120" designed for 25% impact from placing 1 of 2 loads per shelf.
- Spans from 122" to 144" designed for 25% impact from placing 1 of 3 loads per shelf.
- Applicable for non-seismic use only. Building codes may require otherwise.
- Capacities are for beam components only. Overall rack system configuration is the responsibility of others.
- Contact your Tri-Boro representative for design assistance or for applications not covered by above.

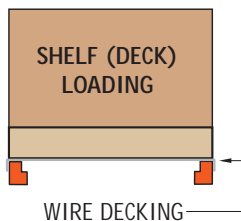
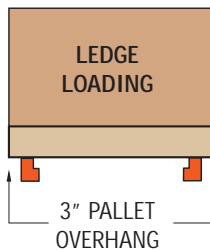
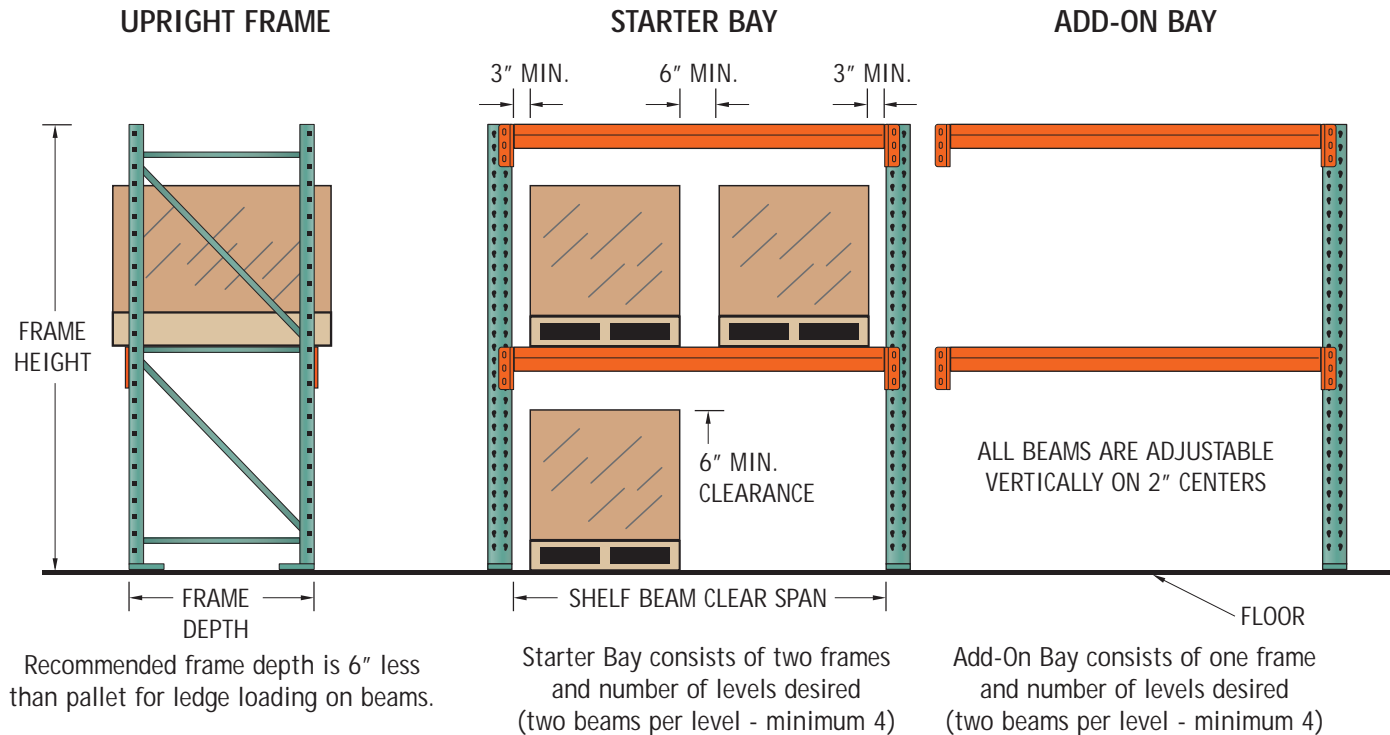


## ROLL-FORMED STEP BEAM PART NUMBER (EXAMPLE: 4 1/8" x 96")

SB	4125	96
ROLL- FORMED STEP BEAM	HEIGHT IN INCHES	LENGTH IN INCHES



# How To Order



**BEAM LENGTH:** SHELF LENGTH EQUALS THE DISTANCE BETWEEN UPRIGHTS. IT IS DETERMINED BY ADDING THE WIDTHS OF PALLET LOADS PLUS A 3" SIDE CLEARANCE BETWEEN UPRIGHT AND PALLET AND 6" BETWEEN PALLET LOADS. SHELF BEAM CAPACITIES ARE BASED ON A PAIR OF BEAMS SUPPORTING AN EVENLY DISTRIBUTED LOAD.

**RACK HEIGHT:** ADD THE FOLLOWING FIGURES:

- HEIGHT OF PALLET LOADS (INCLUDING PALLET)
- + HEIGHT OF SHELF BEAM
- + 6" MINIMUM VERTICAL CLEARANCE FOR EACH PALLET LOAD

SUM OF ABOVE DIMENSIONS = RACK HEIGHT

FOR UPPERMOST LOAD LEVEL, LOCATION OF SHELF BEAM SHOULD BE 6" LESS THAN FORK TRUCK'S MAXIMUM LIFT HEIGHT. TOP OF BEAMS NEED TO BE AT 2" INCREMENTS.

## Important Information

Tri-Boro Storage Products (manufacturer of pallet rack) is a member of the Rack Manufacturers Institute of the USA.

Tri-Boro Storage Products fully endorses the 'Specification for Design, Testing, and Utilization of Industrial Steel Storage Racks - ANSI MH16.1-2012 (R2019)'. Tri-Boro Storage Products requires all of its equipment be used within the parameters of the above stated specification. It is the responsibility of any user of this document to ensure that their unique and specific design application corresponds in the first instance to this Specification, then also to any other local or national codes and/or regulations that may be applicable. The descriptive guidelines offered at various points in this document are just that, guidelines; and are only offered as a starting point for general education of any user of this document. Any user applying these guidelines without reference to both the Specification and full knowledge of the individual application, national/local codes, and all applicable regulations, do so at their own risk.



# Specifying a Pallet Rack Installation

*\*Please First see  
"Important Information"  
on first page.*

**Step 1.** Find out everything there is to know about the item you are handling/storing. Find out the three-dimensional size and weight of every load and pallet. Remember, the pallet may not be exactly the same size as the load, there may be overhang one way or the other. Also, be careful to ask about the quality of the bottom of the pallets and whether or not they are capable of resting on beams alone. If they are broken or rotted, they might require wire decking to safely support them.

**Step 2.** Find out everything there is to know about the area that the rack is going to be installed. Start with the physical dimensions of the available space. Next the floor condition, its load bearing capacity, and any slope. Find out about the available clear headroom and the presence of any overhead or other obstructions. Find out if there are any access ways that the rack must not obstruct. Column centerlines and size are also important for flue space specifications and layout information.

**Step 3.** Find out the method to be used for storing and retrieving loads in the rack (most often a fork truck). Can it carry the proposed load? What is its width and right angle turn dimension? What is its maximum lift height? Remember, you must subtract from this number, usually 6", for most pallets to be lifted clear of the beam. Take note of anything else that might impede on its safe interaction with the rack.

**Step 4.** At this point, it is recommended that a sketch be made of each individual bay, no matter how small the job.

**Step 5.** Select the beam. First decide how many loads should be on each beam level. The length of the beam can be determined by adding three inches to either side of the pallet (or load, whichever is largest) and multiplying by all the loads on the beam. For example, a load/pallet of 42" width, two to a beam =  $42" + 3" + 3"$ , multiply by 2 and this comes to a 96" beam. The 3" additions are to give adequate side clearance for loading and unloading. The model of beam should then be selected from the 'Beam Capacity Chart', making sure that the loads do not exceed the maximum capacity. If the beams are longer than 120", they should be tied across the middle to prevent beam spread. If loose decking is to be used, any pair of beams over 90" in length should be tied across the middle for the same reason.

**Step 6.** Figure out how many beam levels you will have in any bay. Are the first pallets/loads going to sit on the floor or on a set of beams? To calculate the number of levels, add together the pallet and load height plus 6" for clearance. Add the face/height of the beam you just selected for the overall total. Fit as many levels as possible in the height available remembering to make sure the fork truck is able to lift the pallet off the top beam with its maximum fork height capabilities. It usually needs an additional 6 – 8" of lift height over the top beam. Finally, make sure there is enough clearance for any sprinkler requirements.

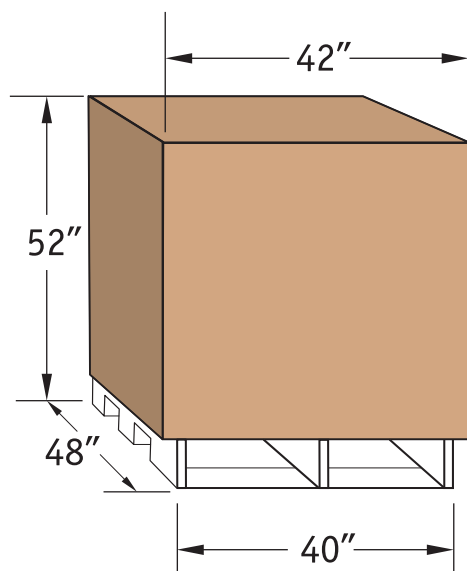


Figure 1.

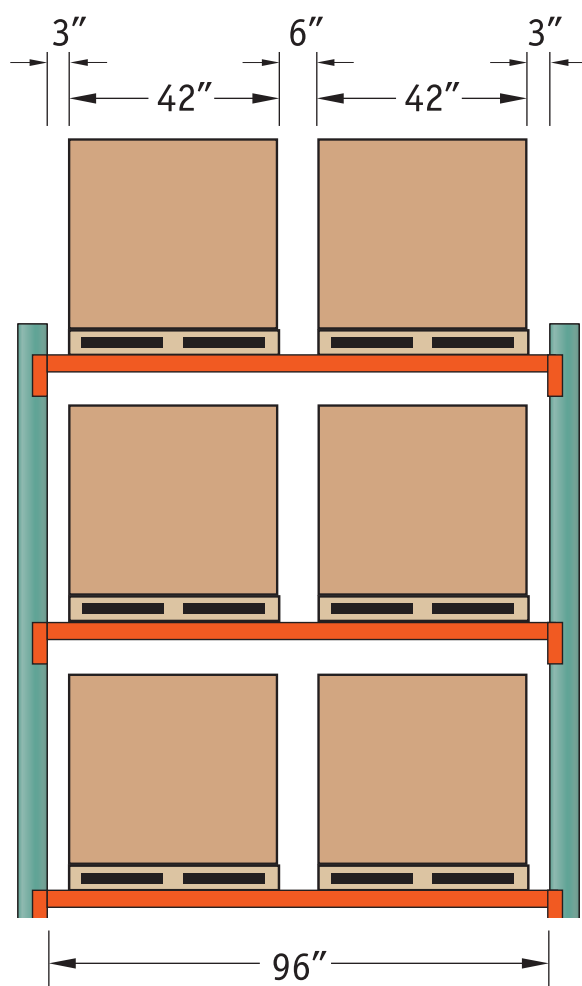


Figure 2.

## Specifying a Pallet Rack Installation *continued*

### Step 7.

- Determine the frame capacity necessary. Total the weight of all pallet loads that will affect one frame. This will be all pallet loads on either side of the frame, up to the center points of the beams (See figure 3 below). Determine the height of the largest pallet opening in the system (usually floor to first beam, but occasionally beam-to-beam above that). Now, using the Frame Capacity Chart, select the appropriate frame model.
- Figure out the height of frame needed. This is the measurement from the floor to the top of the top beam. (see figure 4 below). In most applications, you should then add between 6" and 18" (up to the next standard frame size) to allow for flexibility in installation. If the customer wants the frame flush with the top of the top beam, be very sure to check the load dimensions again very carefully and check the floor for the possibility of slope in both the 'cross-aisle' and 'down-aisle' directions.
- Figure out the depth of frame needed. The dimension of the pallet determines this. In most applications where pallet loads are ledge loaded, an overhang of 3" on either side of the pallet is desirable (if the pallet is 48" deep, the frame should be 42"). If the application demands that the pallets be flush with the front and back faces of the rack bay, cross supports from beam to beam **MUST** be used. The cross supports may be safety bars or wire deck.

**Step 8.** Now, put together your final sketch showing all the bays that go together to make up a row and count up all the beams and frames you need for the system. All beams need to be used as pairs, however when ordering, the total amount of beams (not pairs) should be ordered.

**Step 9.** Is your system a single row? Or will it be installed 'back-to-back' with another row of rack? If it is back-to-back, it should be tied across the 'flue space' in the middle with row spacers. You should always use a minimum of two row spacers no matter the height. You should also ensure there is not a gap greater than 10' in height between row spacers, adding a third or fourth one, if necessary.

**Step 10.** You must now determine whether any single rows require additional stabilization. First, check the height compared to the depth for overturning stability. To do this, find the height from the floor to the top of the very topmost beam. Now, divide that figure by either the depth of the frame (if this is a single row) or the depth of both frames plus the row spacers (if this is a back-to-back row). Is the answer to your division sum larger than 6.0? If so, you will need to call your Tri-Boro representative for assistance, as the system is unstable.

Second, check for rotational stability. Do you have only a single beam level between frames in a bay anywhere? If so, you will need to call your Tri-Boro representative for assistance, as this system also is unstable.

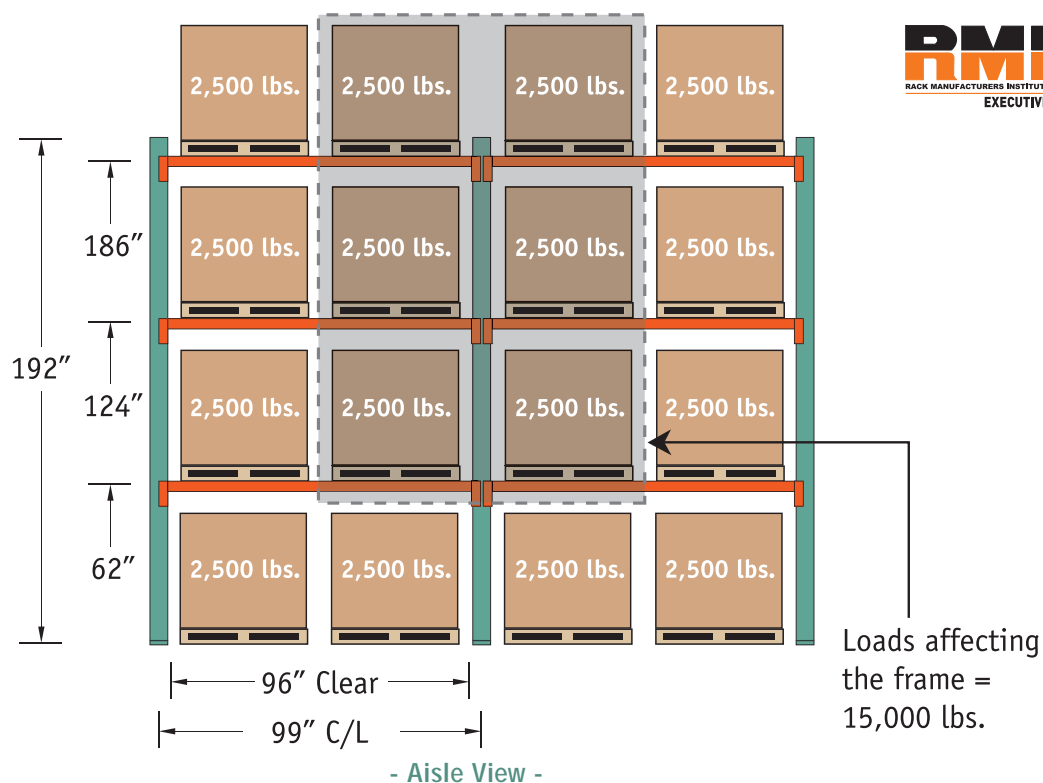


Figure 3.

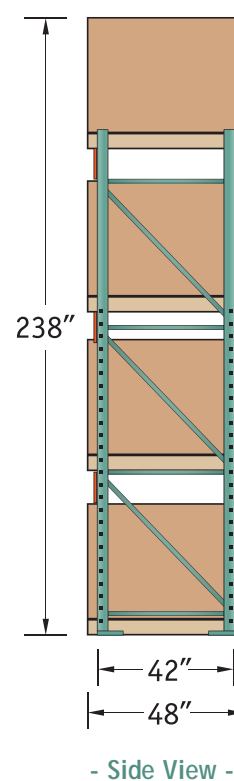


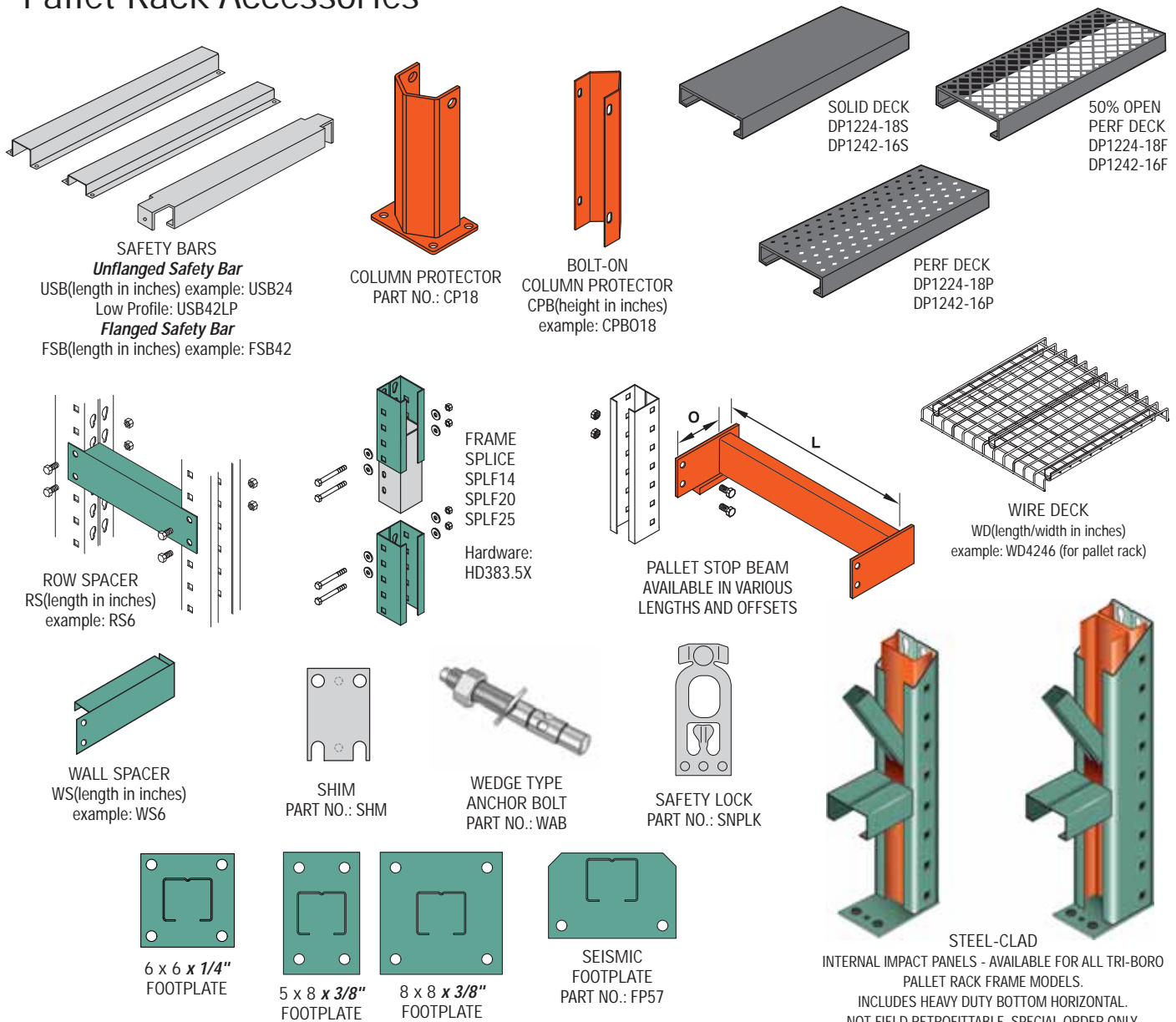
Figure 4.

## Specifying a Pallet Rack Installation *continued*

Generally, Pallet rack installations are structurally engineered systems that carry heavy loads. The steps on the previous pages give a guideline for the safe specification of components for simple cases where conditions are perfect. They are written with regard to RMI 2019 which is the guiding industry specification at time of publication. If, in the future, this specification is revised or overridden or, if you have any doubt or confusion whatsoever about any of the steps above, please contact your Tri-Boro representative for assistance.

Finally, please remember that your system should be shimmed level and anchored to the floor (one anchor per leg).

## Pallet Rack Accessories



### STANDARD COLORS



VISTA GREEN



SIGNAL ORANGE



STANDARD GRAY



BLUE



RED



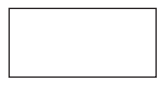
YELLOW



ROYAL BLUE\*



BLACK



SKY WHITE



LIGHT GRAY



SAND



PUTTY



PEARL WHITE



SILVER VEIN



### AVAILABLE COLORS

Additional charges apply and lead time may be affected.

\*SPECIAL ORDER COLOR - MINIMUM RUN REQUIREMENTS APPLY. Please contact your Tri-Boro representative for more information.

# Pallet Rack Quick Ship

The pallet rack frames, beams and accessories listed below are available through Tri-Boro's Quick Ship Program.

Please call for current pricing.



ITEM	CAPACITY	DIMENSIONS	WEIGHT
<b>FRAMES: (48" Beam Spacing)</b>			
F142496	15,220 LB.	3" x 1-5/8" COL. / 24"D x 96"H	36 LB.
F143696	15,220 LB.	3" x 1-5/8" COL. / 36"D x 96"H	39 LB.
F144296	15,220 LB.	3" x 1-5/8" COL. / 42"D x 96"H	41 LB.
F144896	15,220 LB.	3" x 1-5/8" COL. / 48"D x 96"H	42 LB.
F1424120	15,220 LB.	3" x 1-5/8" COL. / 24"D x 120"H	46 LB.
F1442120	15,220 LB.	3" x 1-5/8" COL. / 42"D x 120"H	51 LB.
F1448120	15,220 LB.	3" x 1-5/8" COL. / 48"D x 120"H	53 LB.
F1424144	15,220 LB.	3" x 1-5/8" COL. / 24"D x 144"H	55 LB.
F1442144	15,220 LB.	3" x 1-5/8" COL. / 42"D x 144"H	61 LB.
F1448144	15,220 LB.	3" x 1-5/8" COL. / 48"D x 144"H	63 LB.
F2036144	21,149 LB.	3" x 2-1/2" COL. / 36"D x 144"H	73 LB.
F2042144	21,149 LB.	3" x 2-1/2" COL. / 42"D x 144"H	74 LB.
F2048144	21,149 LB.	3" x 2-1/2" COL. / 48"D x 144"H	77 LB.
F1442192	15,220 LB.	3" x 1-5/8" COL. / 42"D x 192"H	82 LB.
F1448192	15,220 LB.	3" x 1-5/8" COL. / 48"D x 192"H	84 LB.
F2042192	21,149 LB.	3" x 2-1/2" COL. / 42"D x 192"H	99 LB.
F2048192	21,149 LB.	3" x 2-1/2" COL. / 48"D x 192"H	103 LB.
F2542192	23,200 LB.	3" x 3" COL. / 42"D x 192"H	108 LB.
F2548192	23,200 LB.	3" x 3" COL. / 48"D x 192"H	111 LB.
F2542240	23,200 LB.	3" x 3" COL. / 42"D x 240"H	129 LB.
<b>BEAMS: (Per Pair)</b>			
SB250048	4,066 LB.	2-1/2" x 2-1/2" / 48" L	8.5 LB.
SB412548	8,775 LB.	4-1/8" x 2-1/2" / 48" L	12.5 LB.
SB250096	1,505 LB.	2-1/2" x 2-1/2" / 96" L	16.5 LB.
SB350096	3,483 LB.	3-1/2" x 2-1/2" / 96" L	20.9 LB.
SB412596	5,028 LB.	4-1/8" x 2-1/2" / 96" L	23.0 LB.
SB462596	6,067 LB.	4-5/8" x 2-1/2" / 96" L	24.8 LB.
SB512596	7,596 LB.	5-1/8" x 2-1/2" / 96" L	28.0 LB.
SB4625108	5,309 LB.	4-5/8" x 2-1/2" / 108" L	27.6 LB.
SB5125120	5,887 LB.	5-1/8" x 2-1/2" / 120" L	34.6 LB.
SB6000144	6,511 LB.	6" x 2-1/2" / 144" L	53.9 LB.
<b>ACCESSORIES:</b>			
		<b>DIMENSIONS</b>	
RS6 (ROW SPACER)		6"	1.5 LB.
RS8		8"	2 LB.
RS12		12"	2.5 LB.
FSB36 (FLANGED SAFETY BAR)		36"	5 LB.
FSB42 (FLANGED SAFETY BAR)		42"	6 LB.
FSB48 (FLANGED SAFETY BAR)		48"	7 LB.
CP18 (COLUMN PROTECTOR)		18" H	12 LB.
WD3646 (WIRE DECK)	(WATERFALL FRONT & REAR, 2500 LB. CAP.)	36" x 46"	15.5 LB.
WD4246 (WIRE DECK)		42" x 46"	19.7 LB.
WD4846 (WIRE DECK)		48" x 46"	23.8 LB.
WAB (WEDGE ANCHOR BOLT)		1/2" x 3-3/4"	0.5 LB.
SHM (STANDARD FOOTPLATE SHIM)		3-1/32" x 4-1/2"	0.25 LB.
SNPLK (REPLACEABLE BEAM SAFETY SNAP LOCK)			0.15 LB.
SPVG (TOUCH UP SPRAY PAINT, VISTA GREEN)			1.3 LB.
SPSO (TOUCH UP SPRAY PAINT, SIGNAL ORANGE)			1.3 LB.

**All materials subject to Availability/Prior Sale and Credit Approval.** Quick-Ship is intended for Less-Than-Truckload orders. Typical Quick-Ship orders will ship in 3 business days after receipt and approval of written purchase order. Quick-Ship orders exceeding 12,000 lbs. will ship in up to 10 business days. FOB Farmville, VA 23901 Freight Collect

# Index

## A

Accessories:	
Automotive Shelving .....	17
Bin Divider Units .....	16
Rivet-Rak .....	44
Shelving .....	12-15
Work Bench .....	38
Add-On, Shelving .....	18-21
Angle Beams .....	42
Angle Cutter .....	24
Angle Posts .....	8, 42
Angle, Slotted .....	24-25
Archive Shelving .....	23, 45
Angle Sways .....	13
Automotive Shelving .....	17

## B

Bench:	
Accessories .....	38
Legs .....	38
Work .....	37
Backs, Shelving .....	11, 44
Bases, Shelving .....	15
Bin Divider Units .....	29-36
Bin Dividers .....	16
Bin Fronts, Shelving .....	14
Bolts, Hardware .....	12
Box Post .....	6, 8
Box Shelf .....	6, 7, 10
Boxes, Shelf .....	16, 33, 36
Braces, Shelving .....	12
Bulkmaster, Rivet-Rak .....	41

## C

Carts:	
Service .....	26-28
With Drawers .....	27
Shelf Trucks .....	28
Clips, Shelf .....	12
Cabinet Style, Shop Desk .....	39
Closed Shelving .....	18-21
Channel Beam .....	43
Color Selection .....	6, 30, 41, 52

## D

Drawers:	
Bench Drawers .....	38
Cart Drawers .....	27
Shelf Boxes .....	16, 33, 36
Shelf Drawer Units .....	36
Desks, Shop .....	39
Dividers, Bin .....	16
Dividers, Shelving .....	16
Doors, Shelving .....	7

## E

Economy Carts .....	26-27
End Stops, Bench .....	38

## F

Flange, Shelf .....	6-7, 10
Foot Plate, Shelving .....	8-9

## G

Galvanized Slotted Angle .....	24-25
Gusset Plates .....	24

## H

Heavy Duty:	
Carts .....	26
Foot Plates .....	9
Posts .....	9
Shelving .....	22-23

## L

Label Holders .....	12
Legs, Work Bench .....	38
Light Duty Beams .....	42
Load Capacity Charts .....	7, 40, 47
Lower Shelf, Work Bench .....	38

## M

Mobile Shelf Trucks .....	28
---------------------------	----

## O

Offset Posts .....	6, 8, 9
Open Shelving .....	18-21

## P

Packaging Bench .....	45
Pallet Rack .....	47-53
Panels, Side & Back .....	11
Particle Board, Rivet-Rak .....	43
Parts, Rivet-Rak .....	41-44
Parts, Shelving .....	8-16
Parts, Work Bench .....	37-38
Perf Deck .....	46
Posts, Rivet-Rak .....	42
Posts, Shelving .....	6, 8, 9

## Q

Quick Page Reference .....	17
Quick-Ship, Pallet Rack .....	53

## R

Racks:	
Archive .....	23, 45
Packaging Bench .....	45
Pallet .....	47-53
Record Storage .....	23, 45
Rivet-Rak .....	40-45
Specialty .....	23, 45
Tire .....	45
Work Center .....	45

## S

Shelving:	
Add-On Units .....	18-21
Boxer (Box Shelf) .....	6, 7, 10
Clips .....	12
Closed .....	18-21
Klip-It .....	19-21
Label Holders .....	12
Open .....	18-21
Parts List .....	17
Posts .....	6, 8, 9
Shelves .....	6, 7, 10
Sliding Shelf Divider .....	16
Specialty .....	23, 45
Splices .....	13
Starter Units .....	18-21
Sturdi-Frame .....	22-23
Thunderbolt .....	18-21
Service Carts .....	26-28
Shelf Boxes .....	16, 33, 36
Shop Desks .....	39
Slotted Angle .....	24-25
Solid Deck .....	46
SpaceMaster Rivet-Rak .....	41
Steel Bench Tops .....	37
Sway Braces .....	12

## T

Tire Racks .....	45
Tops, Work Bench .....	37
Trucks, Shelf .....	28

## W

Wire Decking .....	43
Work Benches .....	37-38
Work Center .....	45
Work Table .....	39

# Tri-Boro Storage Products



## Tri-Boro Pallet Rack

- ONE SOURCE for Industrial Steel Shelving and Warehouse Rack
- Quick Ship Program
- 100% USA Made

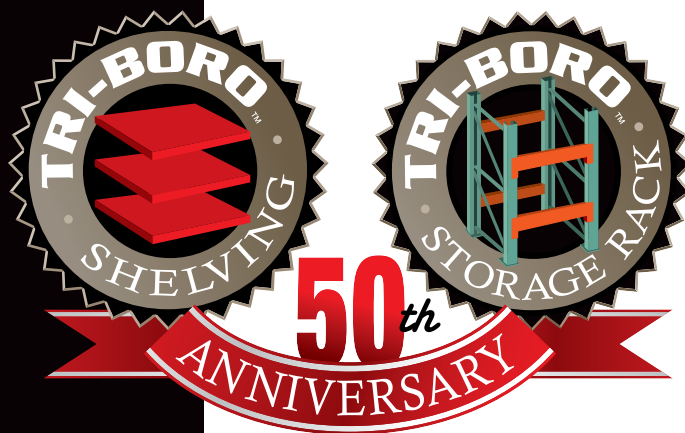


# TRI-BORO

Review the Full Line  
of Tri-Boro Products  
on our expanded  
web site:

**triboroshelving.com**

- Boxer™
- Bin & Drawer Units
- Specialty Racks
- Steel Shelving: Thunderbolt & Klip-It
- Rivet-Rak™
- Pallet Rack
- Sturdi-Frame
- Work Benches
- Shop Desks
- Service Carts: Open & Closed
- Slotted Angle
- Accessories



## Tri-Boro Storage Products

Tri-Boro Shelving & Partition Corp. | Tri-Boro Rack & Storage Products

**800-633-3070**

300 Dominion Drive, Farmville, VA 23901  
434-315-5600 • Fax: 434-315-0139

19-40 Flushing Avenue, Ridgewood, NY 11385  
718-782-8527 • Fax: 718-963-0457



© 2021 TRI-BORO RACK & STORAGE PRODUCTS 1021 1